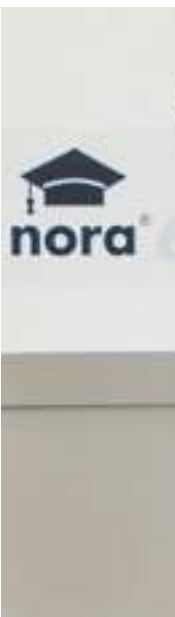




Rubber floor coverings and accessories 2022

nora[®]
by **Interface**[®]





Innovative floor coverings made in Germany

We are driven by the idea of creating outstanding and distinctive flooring solutions that meet the widest possible range of applications. We have found the ideal material for this in high-quality rubber, which we transform into permanently resilient and extremely resistant floor coverings through an innovative manufacturing process.

nora® floor coverings also have excellent ergonomic properties and absorb footfall sound. They are free of phthalate plasticisers, which keeps them dimensionally stable, while their dense and closed surface makes cleaning and maintenance easy. They meet different slip-resistance requirements for various application areas, as well as the strictest fire protection criteria (acc. to EN 13501).

Our floor coverings are extremely versatile and can be used virtually anywhere. You will find them worldwide for instance in

- hospitals and nursing facilities,
- educational facilities,
- public buildings and transport sector as well as
- industrial buildings.

Above all, everything we do is aimed at achieving our customers' goals. That is why our nora floor coverings provide perfect service today, tomorrow and far into the future.



CONTENTS

Introduction	4 – 11
norament® floorings	12 – 27
noraplan® floorings	28 – 49
nora® special floorings	50 – 67
nora® stairwell solutions	68 – 79
norament® stairtreads	68 – 75
nora® stair accessories	76 – 79
nora® install	80 – 93
nora® nTx	80 – 85
nora one®	86 – 89
nora® accessories	90 – 93
nora® clean	94 – 95
nora® pads	94 – 95
nora 4you	96 – 99
Inlays	96 – 97
Planks and tiles	98
Special colours	99
Technical data	100 – 104



About Interface

Interface, Inc. is a global flooring company specializing in carpet tile and resilient flooring, including luxury vinyl tile (LVT) and nora® rubber flooring.

Interface helps its customers to create high-performance interior spaces that support well-being, productivity, and creativity, as well as the sustainability of the planet. The mission Climate Take Back™ invites stakeholders to join and to act in a way that restores the planet and creates a climate fit for life.

Learn more about Interface at interface.com and blog.interface.com and the Carbon Neutral Floors™ program at interface.com/carbonneutral.

With products from nora, Interface complements its portfolio, giving customers more choices to meet their flooring needs across endless commercial applications. Together, we can create beautiful, functional spaces that have a positive impact on people's lives and the planet.



Interface + nora

Together, Interface and nora offer an unrivaled capacity to cover every single area of your building – from a single source. We can help you find the ideal flooring solutions with the functional properties you need for different spaces – from the classroom to the conference room, to retail spaces and public areas, all the way through stairwells to laboratories and operating rooms.

We have the product range and application expertise to help you find exactly what you need, where you need it. And we look forward to helping you find it.



Carbon Neutral Floors™

In keeping with its 25-year commitment to sustainability, Interface has taken a holistic approach to carbon neutrality, looking beyond carbon emissions from manufacturing to considering and calculating emissions across the entire product life cycle. This begins with raw materials and continues through manufacturing, transportation, maintenance and ultimately end-of-life product take-back and recycling.

In 2018, the company launched the Carbon Neutral Floors™ program, which is offered as a standard to every customer, at no extra cost, to help them meet their own sustainability goals while also allowing them to reduce the emissions impact of their projects or spaces. Through the Carbon Neutral Floors™ program, Interface also offers project certificates to provide information to each customer to help them understand the carbon impact of their purchase. For each flooring purchase, the company can calculate the estimated carbon reductions and present that documentation to the customer at the project or total global purchase level.

As a part of the Interface Group, nora systems GmbH has been included into the Carbon Neutral Floors™ program in 2019 as well, which means that also nora® rubber floor coverings are CO₂ neutral* across their entire product life cycle. As a result, Interface's entire product portfolio – carpet tiles, luxury vinyl tiles (LVT), and now also nora® rubber floor coverings – is CO₂ neutral.

*nora® floor coverings are CO₂ neutral over the entire product life cycle. We are continuously working on further reducing CO₂ emissions within the value chain through various measures. Remaining CO₂ emissions are offset by the acquisition of certificates relating to audited emission reduction projects.



Building and corporate certifications, memberships and cooperation agreements

We take our responsibilities towards the environment and society extremely seriously. Various independent facilities have confirmed this to us in the form of different certificates and awards, not just in Germany but in other countries as well.

Sustainability criteria are becoming more and more important in the realisation of building concepts. In public procurement law they are often mandatory for the tender and decisive for the award of a contract. nora can help you score at green building rating systems.



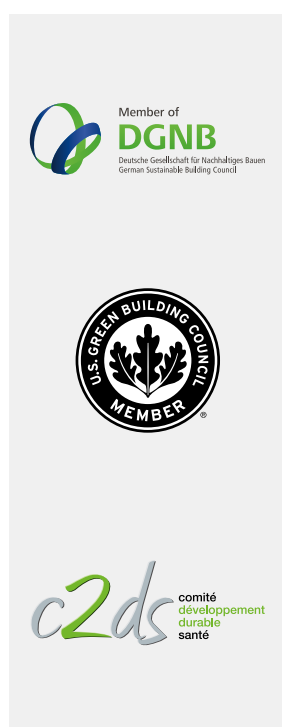
Building certifications

nora® rubber floor coverings, nora® accessories, and nora® installation materials can enhance the sustainability properties of buildings for DGNB (German Sustainable Building Council), LEED (Leadership in Energy and Environmental Design), BREEAM (BRE Environmental Assessment Method), and other certifications.

www.dgnb.de/en/

www.usgbc.org/leed

www.breeam.com/



Memberships and corporate certifications

nora systems GmbH maintains a large number of fruitful relationships with different sustainability institutions. Because our attitude is: Together we are stronger when it comes to preserving our environment.

At nora systems, the production methods and all raw materials are subject to high ecological standards, and nora® products are internationally certified and regularly tested by independent institutes.

In the field of the environment and sustainability, nora systems is one of the leading companies in its sector and is among the initiators of the German Sustainable Building Council (DGNB) and a member of the U.S. Green Building Council (USGBC). nora was the first resilient floor covering manufacturer to publish Environmental Product Declarations (EPDs), and nora was also one of the first resilient flooring manufacturers to receive ISO 14001 certification for our environmental management systems.

Research and innovation are important parts of nora's corporate policy. For this reason, the "German Stifterverband" awarded nora the seal "Innovative through Research", which honours researching companies for the special responsibility they assume for the state and society.



Certified: DIN EN ISO 14001,
DIN EN ISO 50001



nora® floor coverings

Eco-labels, approvals and Environmental Product Declarations



www.blauer-engel.de/uz120

The Blue Angel

One of the world's most famous and oldest eco-label, initiated by the Cabinet of Germany. This guarantees that products fulfil particularly stringent environmental, health, and performance requirements, including emission and constituent specifications.

Approval criteria: DE-UZ 120



Cradle to Cradle

Cradle to Cradle is a quality standard that examines the biological and technical regenerative cycle of a product's materials. Against this background, the aim is to develop respectively promote a potentially infinite recycling economy. The rating levels range from Basic to Bronze, Silver, Gold and Platinum.

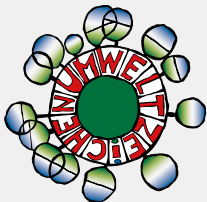
Approval criteria: Cradle to Cradle Certified™ Product Standard



Greenguard Gold

Greenguard Gold Certification promotes the protection and safety of sensitive persons in regards to indoor air quality. Certified products fulfil stringent emission standards, affording an invaluable contribution to the quality of indoor air.

Approval criteria: UL 2818 Standard for Chemical Emissions for Building Materials



Austrian eco-label

The Austrian eco-label is awarded by the Austrian Ministry of Agriculture, Forestry, Environment, and Water Management. It provides information on the environmental impact of consumer goods that arises from their production, usage and disposal. Certified floor coverings exert as small an impact as possible on the environment and health over their whole life cycle.

Approval criteria: UZ 42



ecobau

The ecobau association has been promoting sustainable and healthy building in Switzerland since 2005. ecobau members include public building authorities from the federal government, cantons and cities, as well as organizations such as KBOB, CRB and educational institutions. Together they develop planning tools for ecological construction to support building authorities, planners and architects. The environmental impact of different building materials is assessed from production to disposal.

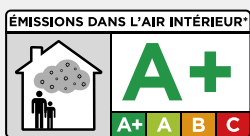
Approval criteria: Methodology building materials ecobau



M1

The Finnish test mark M1 is regarded as the highest certification for building products in the Scandinavian region. Besides stringent emission thresholds for total volatile organic compounds (TVOCs), the label also includes a sensory odour test.

Approval criteria: Classification of Indoor Climate 2018 and the Classification of Building Materials: General Instructions.



Etiquetage

In France, building products are classified according to their potential for emissions. The object is to eliminate risks to the health of persons inside the building. Approval criteria: French VOC label – Emissions dans l'air intérieur (Décret n° 2011-321)



Bygghälsöversyn

The Swedish institute Bygghälsöversyn assesses the sustainability of building products with respect to their emissions, constituents, and production process. The products are classified as "Recommended", "Accepted", or "To be Avoided". Approval criteria: Bygghälsöversyn's criteria for chemical content and life cycle aspects



Indoor Air Comfort GOLD

The Eurofins certification Indoor Air Comfort GOLD combines emissions requirements of the most important European eco-labels in one certificate. With this international label, planners, building owners and architects can specifically use products that do not compromise indoor air by giving off impurities. It means that more purposefully selected products can be used that have been certified thanks to their low emission levels and their sustainable properties.



Singapore Greenbuilding

Singapore Greenbuilding sets high standards and benchmarks for green building solutions. It certifies eco-friendly building products that are resource-efficient, potentially more economical and lower the environmental impact. This certification also considers if the product provides better indoor air quality for a more healthy and productive workplace in buildings. Products can be rated from Good to Very Good, Excellent to Leader.

Approval criteria: Singapore Green Building Product Certification Scheme



Global GreenTag

Global GreenTag is a multi-criteria, green product rating and certification system. It examines the Life Cycle Assessment (LCA) of a product and assesses different benefits as for example greenhouse gas emissions, human health and ecotoxicity as well as biodiversity and resource consumption. Products are awarded on the following three levels: A, B and C.

Approval criteria: GreenTag Standard v4.0



EPDs from Institut Bauen und Umwelt e.V.

EPDs (Environmental Product Declarations) are issued on the basis of international standards by the Institut Bauen und Umwelt e.V. (IBU). They document the ecological aspects of a product over its whole life cycle. An EPD is a neutral, but invaluable source of information in the choice of sustainable building products.

nora® rubber floor coverings

Naturally made of rubber

nora® floor coverings are made of high-quality natural and industrial rubber. They are mixed with minerals from natural sources and other components, such as colour pigments, pulled into blanks, pressed and then vulcanized under heat and high pressure.

Due to the special properties of rubber, nora® floor coverings don't require phthalate plasticisers and don't need to be coated. They retain their unique functionality and aesthetics for decades. The floor coverings are rounded off by an unparalleled range of accessories and an outstanding service for a design that is both harmonious and cross-functional - across all surfaces, stairs and levels.



Our product lines offer boundless possibilities

Everyone aspires to individuality. Why should this claim stop at the floor covering? Our product lines norament® and noraplan® together with our special floorings form a perfectly practical synthesis of design and functionality with consideration of environmental impacts. We are therefore convinced that we can offer our customers the perfect solution for every need and creative idea. Get to know our product portfolio on the following pages, and learn more about how you can set highlights with nora® floor coverings and system solutions.

norament®

This classic rubber floor covering is a convincing combination of outstanding quality and functionality. Thanks to its dense surface, it withstands even the highest loads and furthermore can be used in a wide variety of working environments, for example in the industrial sector. The product portfolio comprises a total of seven designs: from the classic pastille norament® 926/825, which was used for decades at Frankfurt Airport, the center of European air traffic, to norament® 926 arago, which due to its stone look lends a modern ambience to interiors.

noraplan®

noraplan® floor coverings are available in rolls or tiles with great designs and colours for virtually unlimited design opportunities. Outstanding technical and functional properties make noraplan® floorings suitable for the most diverse demands and environments, such as hospitals, kindergartens or universities. The product portfolio consists of ten designs. noraplan® signa for example offers the largest selection of all nora® floorings with a palette of 48 colours.

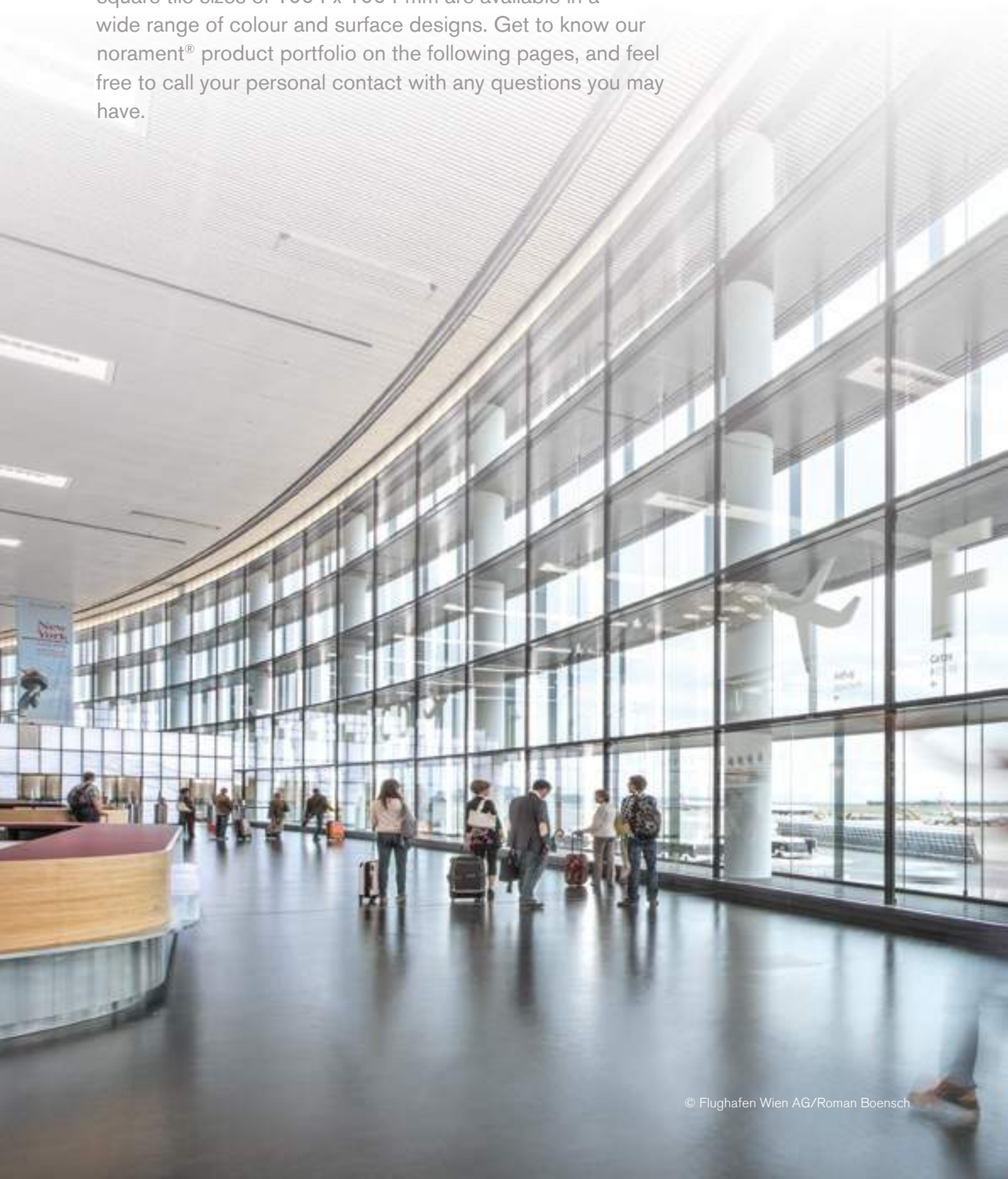
Special floorings

We have developed various special floor coverings for areas subject to special technical standards and requirements. These include e.g. acoustic floor coverings with an impact sound improvement index of 20 dB, electrostatically dissipative or conductive qualities, removable floor coverings or highly specialised solutions for ice rinks, golf facilities, and many more. With noracare® we also offer a special sheet flooring for areas with extraordinary demands on hygienic cleaning and maintenance as well as stain and chemical resistance.



norament®

norament®, the pioneer among rubber floor coverings, represents absolute top quality and functionality. The standard square tile sizes of 1004 x 1004 mm are available in a wide range of colour and surface designs. Get to know our norament® product portfolio on the following pages, and feel free to call your personal contact with any questions you may have.





Children's Hospital Colorado, USA © John Wagman Global Photo Associates



Kita "An der Schutter", Ingolstadt, Germany © Dirk Wilhelmy



taz, Berlin, Germany © Stephan Falk



Elementary and Middle School Niederaichbach, Germany © Markus Bachmann



norament® 926/825

One-coloured, classic round pastille for use in extremely heavy (926) and heavy-traffic areas (825).



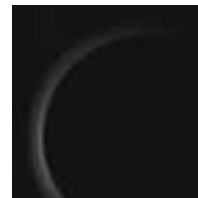
5335



┌ 5336



┌ ⚠ 5337



┌ ⚠ *0702



*6173



┌ *0884



┌ ⚠ *0749



┌ *0716



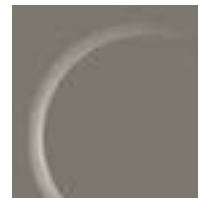
*0170



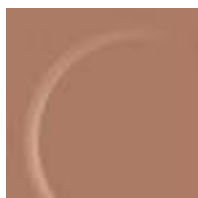
┌ 0007



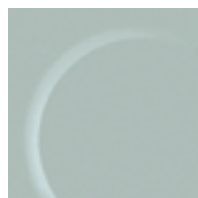
5338



┌ ⚠ *0882



5339



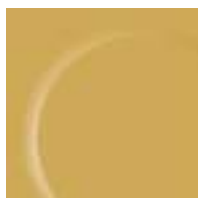
5340



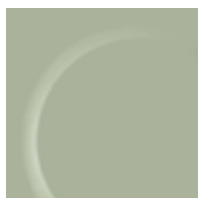
┌ ⚠ 0319



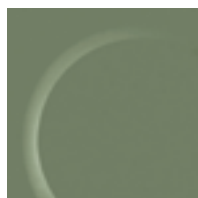
┌ *0733



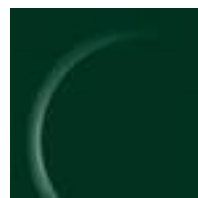
5341



5342



 2070



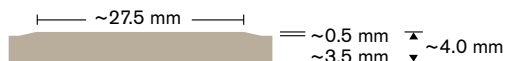
 5343

norament® 926

 20

Art. 926/354

□ ~1004 mm x 1004 mm




nora® profile connection dimension: E + U

Resists most oils and greases

Slip resistant R9

These colours can also be delivered as:

 Stairtread norament® 926, page 70

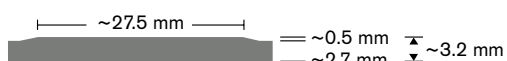
 norament® 992 for extreme requirements, page 54

*** norament® 825**

 8

Art. 825/1902

□ ~501 mm x 501 mm



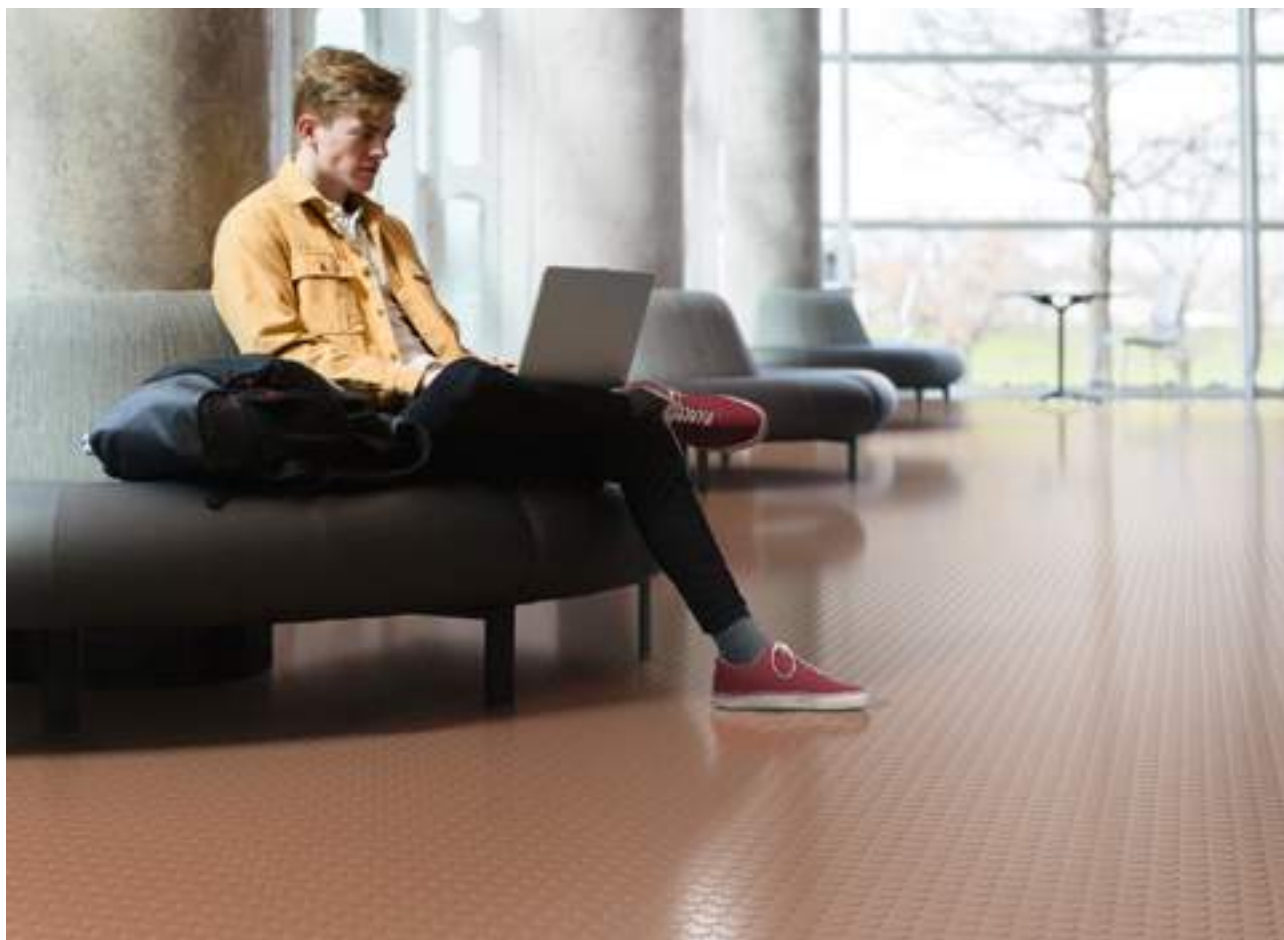
nora® profile connection dimension: D + U

Slip resistant R9

* These colours can also be delivered as norament® 825.

Special colours are available on request.

Please ask for minimum quantities and delivery times.





norament® 926 grano

A granular design rich in contrast with a hammerblow surface or a cubic structure for use in extremely heavy-traffic areas.



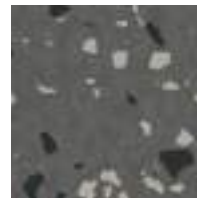
⚡🌱 5301



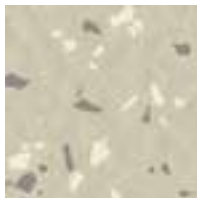
🌱📐⚠️ 5302



📐🌱📐⚠️ 5303



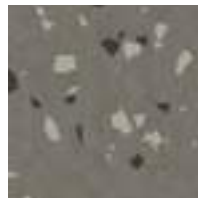
📐⚡🌱📐⚠️ 5304



🌱 5305



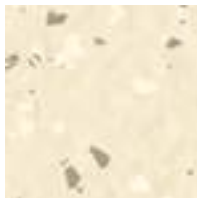
⚡🌱 5306



🌱 5307



📐🌱⚠️ 5308



5309



📐 5310



📐 5311



5312



📐 5313



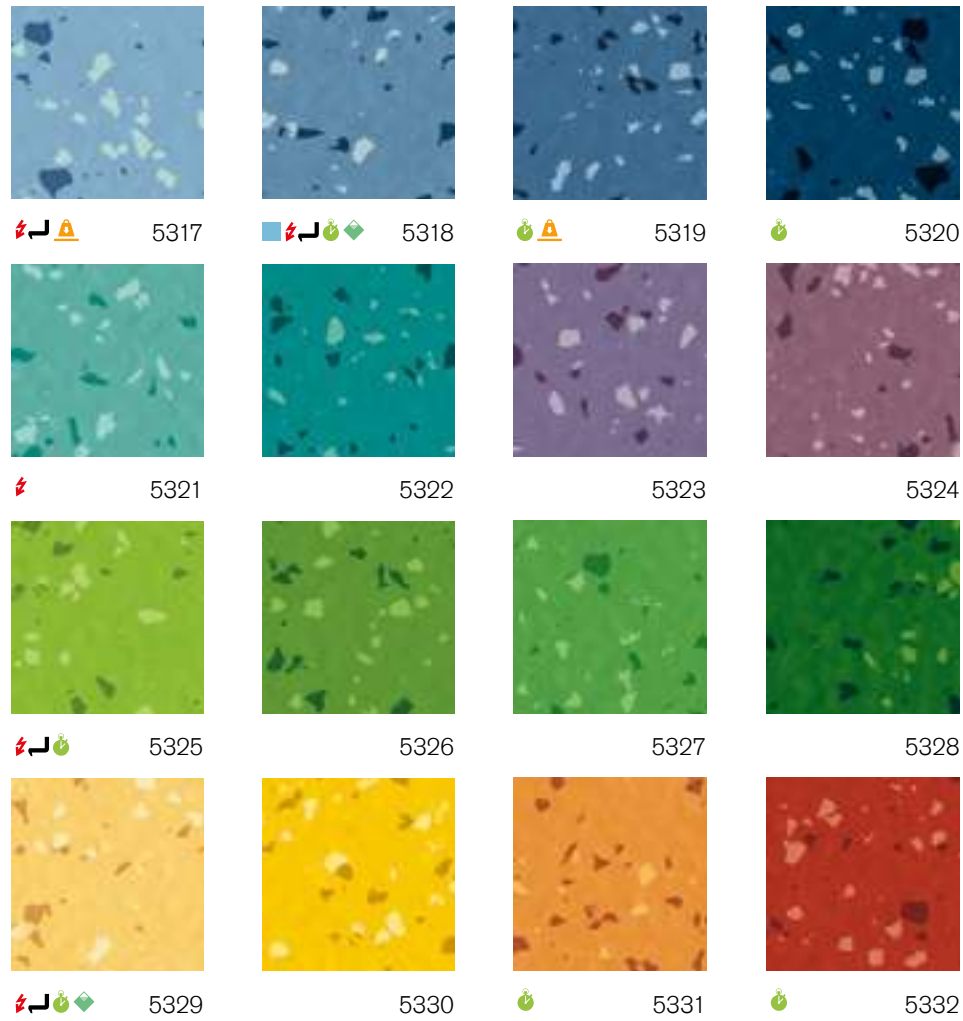
📐📐 5314



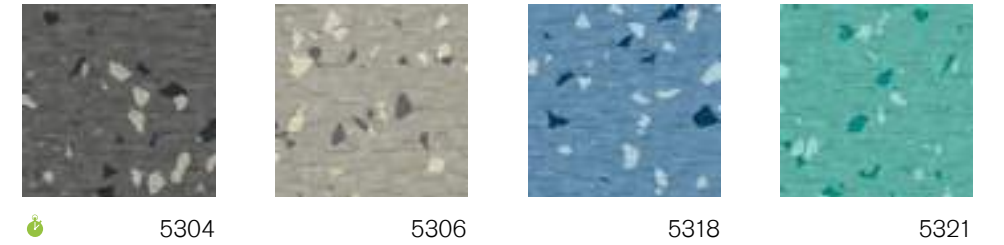
📐🌱 5315



5316



norament® 926 grano · cubic structure



norament® 926 grano



Art. 926 grano/1870

□ ~1004 mm x 1004 mm



nora® profile connection dimension: E + U

Resists most oils and greases

Slip resistant R10

norament® 926 grano · hammerblow surface

norament® 926 grano



Art. 926 grano/1880

□ ~1004 mm x 1004 mm



nora® profile connection dimension: E + U

Resists most oils and greases

Slip resistant R9

These colours can also be delivered as:

- norament® 928 grano ed electrostatically dissipative, page 57
- Stairtread norament® 926 grano, page 71
- norament® 926 grano nTx self-adhesive, page 82
- norament® 975 LL removable, page 52
- norament® 992 grano for extreme requirements, page 55

norament® 926 grano



Art. 926 grano/1911

□ ~610 mm x 610 mm



nora® profile connection dimension: E + U

Resists most oils and greases

Slip resistant R9

Additional information on nora® nTx can also be found at ntx.nora.com.

Special colours are available on request.

Please ask for minimum quantities and delivery times.



Vehmaan School, Vehmaa, Finland



Kita "An der Schutter", Ingolstadt, Germany

© Dirk Wilhelmy

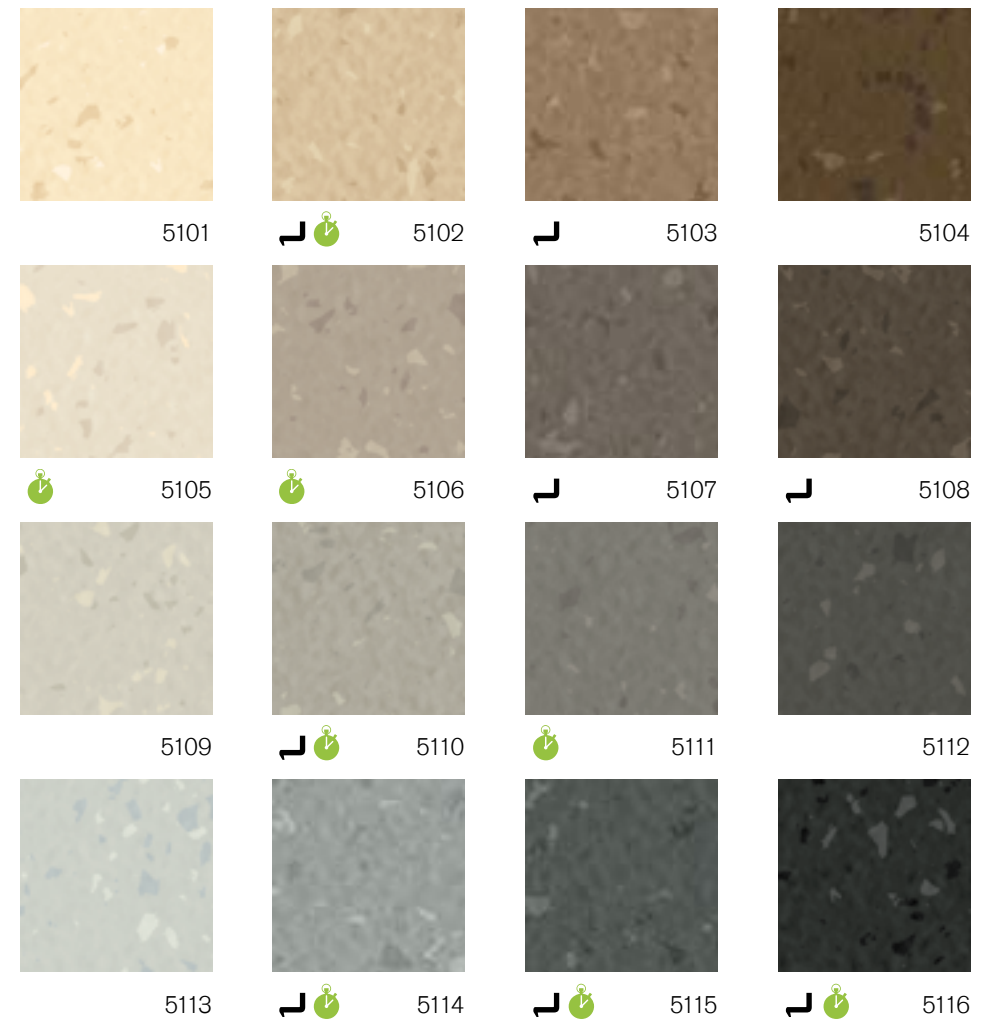
norament®

18 norament®



norament® 926 satura

Tone-in-tone granular design with a hammerblow surface for use in extremely heavy-traffic areas.





norament® 926 satura

32

Art. 926 satura/1880

□ ~1004 mm x 1004 mm



nora® profile connection dimension: E + U

Resists most oils and greases

Slip resistant R9

These colours can also be delivered as:

Stairtread norament® 926 satura, page 72

norament® 926 satura nTx self-adhesive, page 83

Additional information on nora® nTx can also be found at ntx.nora.com.

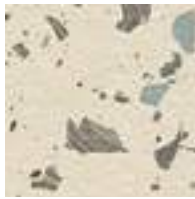
Special colours are available on request.

Please ask for minimum quantities and delivery times.



norament® 926 pado

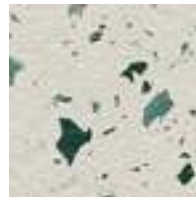
A vivid granular design inspired by ancient terrazzo with a slightly structured two-tone surface for maximum demands.



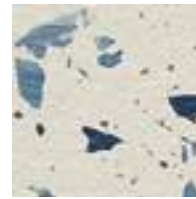
5501



5502



5503



5504



5505



*5506



*5507



5508



5509



5510



*5511



5512



5513



5514



*5515



*5516

norament® 926 pado

16

Art. 926 pado/3167

□ ~1004 mm x 1004 mm



nora® profile connection dimension: E + U

Resists most oils and greases

Slip resistant R9

* This colour contains granulate from recycled rubber flooring.

Also available as norament® 926 pado nTx, page 80

Additional information on nora® nTx can also be found at ntx.nora.com.

Special colours are available on request. Please ask for minimum quantities and delivery times.





norament® 926 castello

Slightly structured two-tone surface combined with an irregular grain design and modern marbling for maximum demands.
No two tiles are the same – each tile is totally unique.



reddot winner 2021



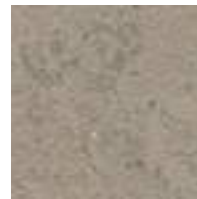
5351



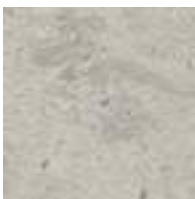
5352



5353



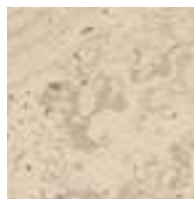
5354



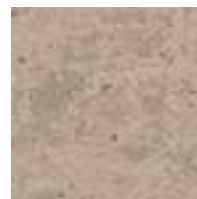
5355



5356



5357



5358

norament® 926 castello

 8

Art. 926 castello/3167

□ ~1004 mm x 1004 mm

 ~3.5 mm

nora® profile connection dimension: E + U

Resists most oils and greases

Slip resistant R9

norament® 926 castello nTx
self-adhesive, page 83

Variations in colour and design, even within one production batch, define the product's aesthetic character.

Additional information on nora® nTx can also be found at ntx.nora.com.

Special colours are available on request.

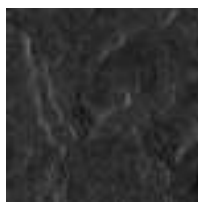
Please ask for minimum quantities and delivery times.



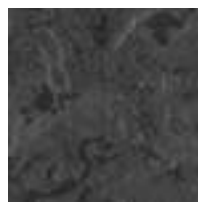


norament® 926 arago

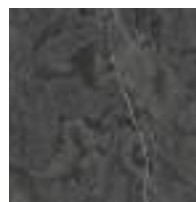
Flat, direction-oriented relief structure with fine grain design and modern marbling for maximum demands. No two tiles are the same – each tile is totally unique.



5170



5171



5172



5173



5174



5175



5176



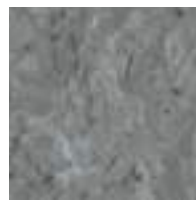
5177



5178



5179



5180



5181

norament® 926 arago

12

Art. 926 arago/3118

□ ~1004 mm x 502 mm

 ~3.5 mm

nora® profile connection dimension: E + U

Resists most oils and greases

Slip resistant R10

norament® 926 arago with chamfered edges

12

Art. 926 arago/3119

□ ~998 mm x 497 mm

 ~3.5 mm


nora® profile connection dimension: E + U

Resists most oils and greases

Slip resistant R10

These colours can also be delivered as:

 Stairtread norament® 926 arago, page 73

 norament® 926 arago nTx
self-adhesive, page 83

Order-related smaller formats can be cut for individual installation combinations from norament® 926 arago tiles with the standard dimensions of 1004 mm x 502 mm.

Variations in colour and design, even within one production batch, define the product's aesthetic character.

We supply tiles with chamfered edges on request such that the tile character of the installed floor covering is even more emphasized.

Additional information on nora® nTx can also be found at ntx.nora.com.

Special colours are available on request.

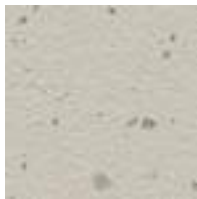
Please ask for minimum quantities and delivery times.





norament® 926 kivo

Irregular grain design with a slightly structured two-tone surface for high demands.



5361



5362



5363



5364



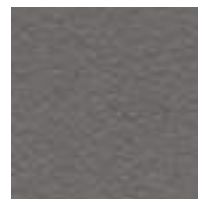
5365



5366



5367



5368

norament® 926 kivo

8

Art. 926 kivo/3166

□ ~1004 mm x 1004 mm

 ~2.7 mm

nora® profile connection dimension: C + U

Resists most oils and greases

Slip resistant R9

Variations in granulate scattering, even within one production batch, define the product's aesthetic character.

**Special colours are available on request.
Please ask for minimum quantities and delivery times.**



noraplan®

noraplan® floor coverings are available as sheet material or tiles, and offer an unlimited scope of design possibilities due to the the variety of designs and colours. All noraplan® floorings are suitable for heavy-traffic areas. Learn more about the noraplan® product portfolio, the technical properties as well as the possible applications.





Hospital Floridsdorf, Vienna, Austria © Markus Bachmann



Zalando Headquarter, Berlin, Germany © Stephan Falk



Canteen Otto Group, Hamburg, Germany © Valeska Achenbach

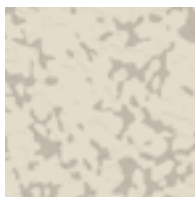


Daycare Hucky Bucky, Berlin, Germany © HEJM, Architect: baukind, Berlin, Germany



noraplan® lona

Elegant design with silk-matte, lightly structured surface that adds visual depth to the filigree arrangement of contrasting colours and accents.



6900



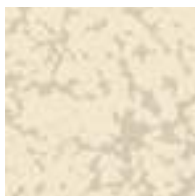
6901



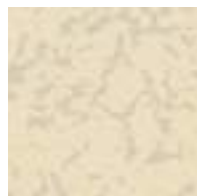
6902



6903



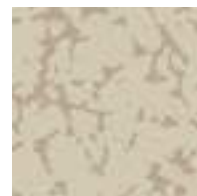
6904



6905



6906



6907



6908



6909



6910



6911



6912



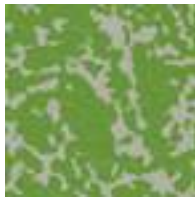
6913



6914



6915



6916



6917



6918



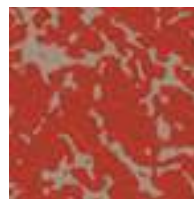
6919



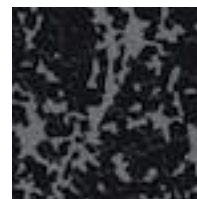
6920



6921



6922



7146

noraplan® lona

24

Art. 166B

~1.22 m x 15.0 m

Art. 266B

~610 mm x 610 mm

15 = 5.58 m² in one carton

~2.0 mm

nora® profile connection dimension: A + U

Slip resistant R9

Also available as noraplan® lona nTx, page 80

Additional information on nora® nTx can also be found at ntx.nora.com.

Special dimensions (e.g. short rolls) are available on request. Please ask for minimum quantities and delivery times.





noraplan® linee

Subtle directional lines create gently shaded contrasts with the base colour. The linear surface at once accentuates and visually supports the restrained design.



7301



7302



7303



7304



7305



7306



7307



7308



reddot winner 2021

noraplan® linee

8

Art. 160E

~1.22 m x 15.0 m

~2.0 mm

nora® profile connection dimension: A + U

Slip resistant R9

Also available as noraplan® linee nTx, page 80

Additional information on nora® nTx can also be found at ntx.nora.com.**Special dimensions (e.g. short rolls) are available on request. Please ask for minimum quantities and delivery times.**



noraplan® sentica

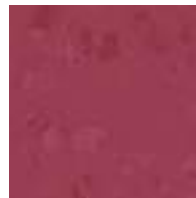
A changing base colour of harmoniously matched colour compositions with a smooth surface.



6500



6501



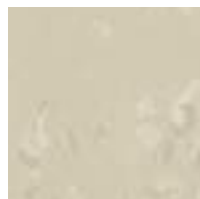
6502



6503



6504



6505



6506



6507



6508



6509



6510



6511



6512



6513



6514



6515



noraplan® sentica
38

Art. 1700

~1.22 m x 15.0 m

Art. 2700

~610 mm x 610 mm

15 □ = 5.58 m² in one carton

~2.0 mm

nora® profile connection dimension: A + U

Slip resistant R9

noraplan® sentica
14

Art. 1701

~1.22 m x 12.0 m

Art. 2701

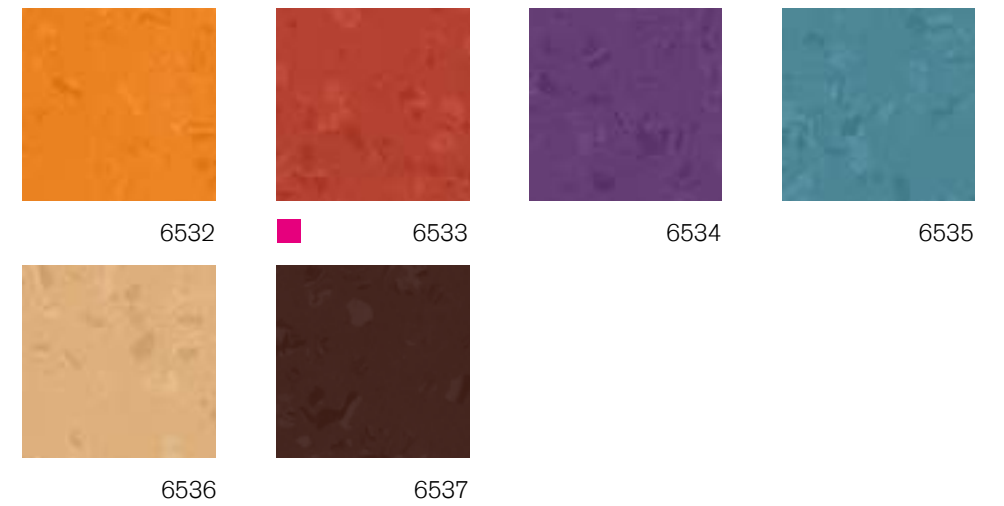
~610 mm x 610 mm

10 □ = 3.72 m² in one carton

~3.0 mm

nora® profile connection dimension: D + U

Slip resistant R9



These colours can also be delivered as:

- noraplan® sentica ed electrostatically dissipative, page 58
- noraplan® sentica acoustic footfall-sound-absorbing 20 dB, page 61
- noraplan® sentica nTx self-adhesive, page 84

Additional information on nora® nTx can also be found at ntx.nora.com.

Special colours and dimensions (e.g. short rolls) are available on request.

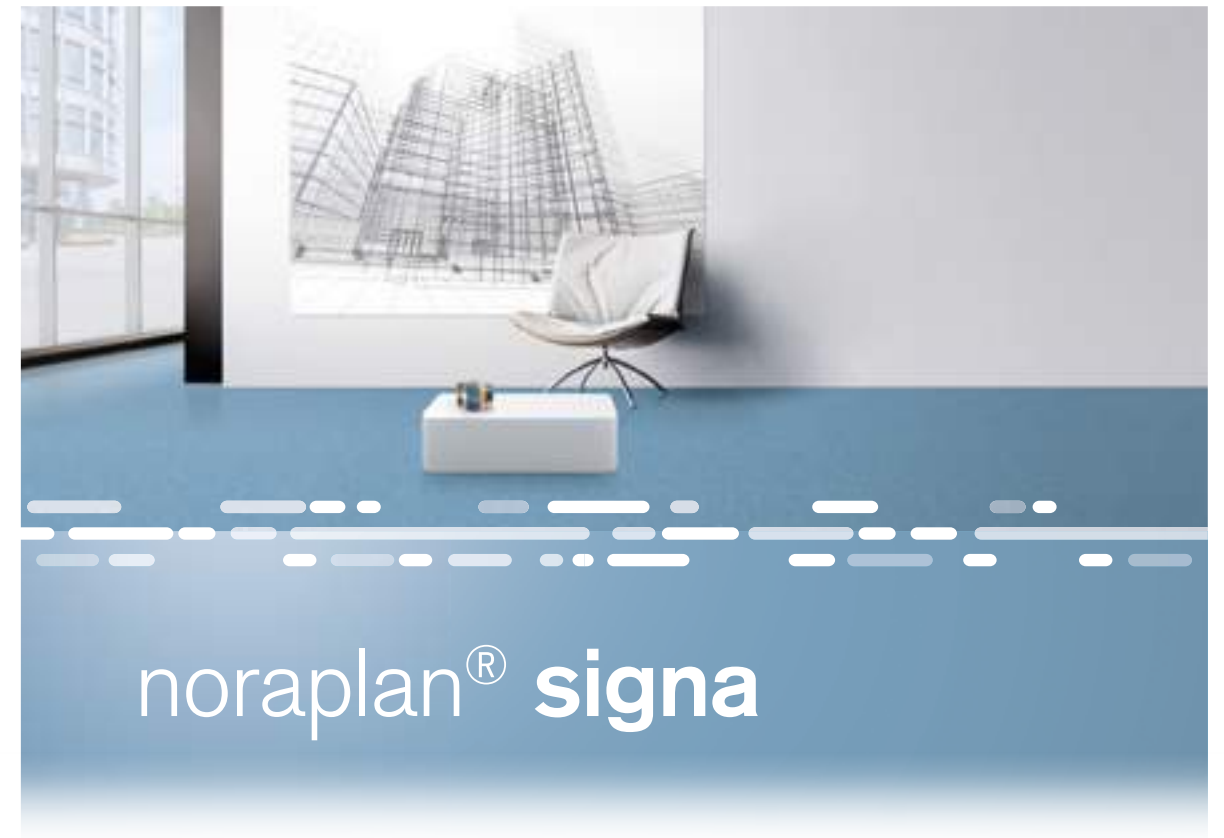
Please ask for minimum quantities and delivery times.





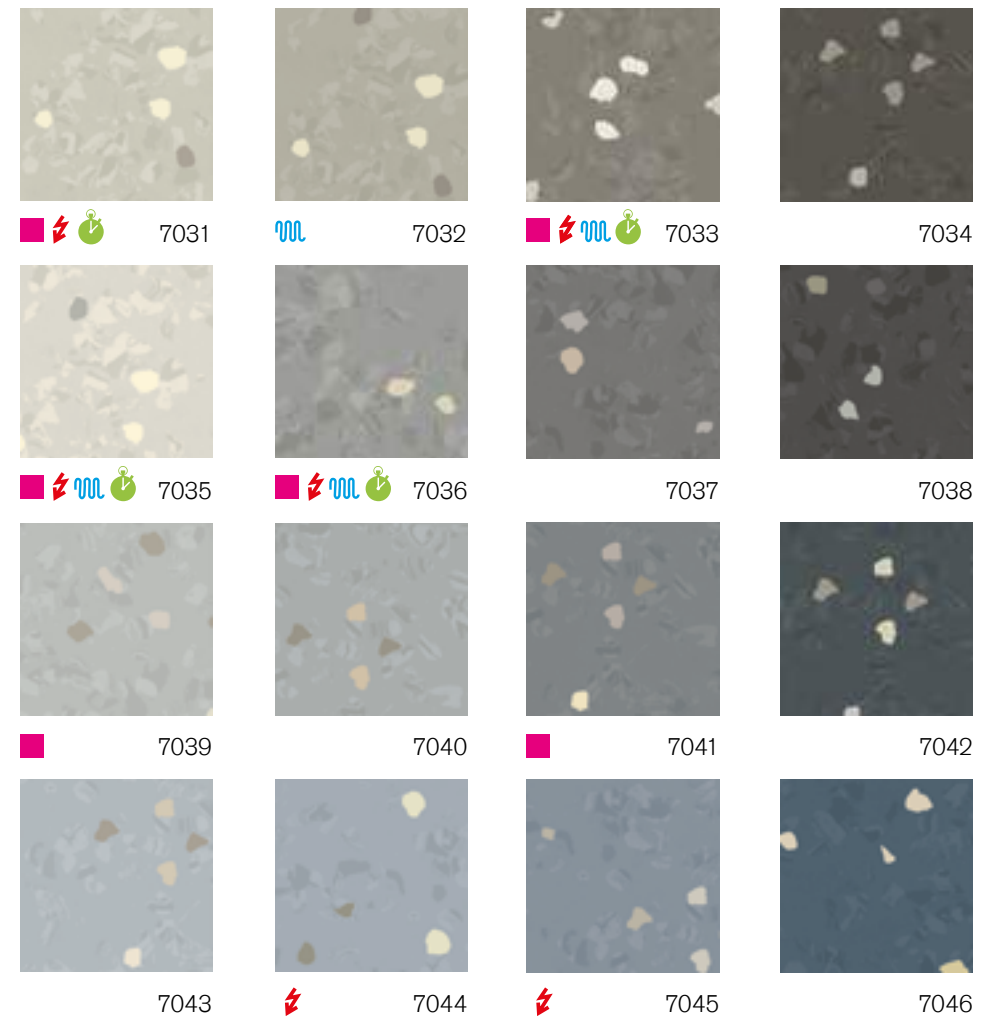
Erwin Fischer School, Greifswald, Germany

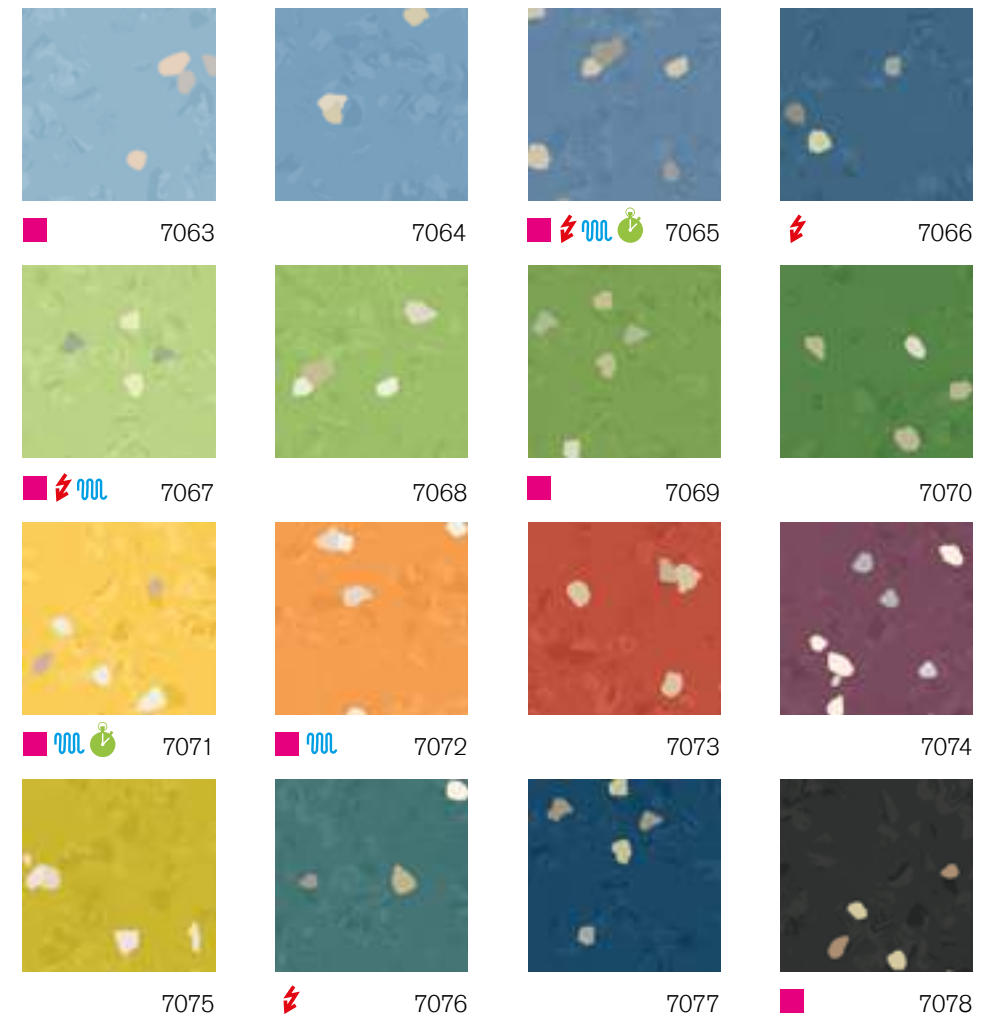
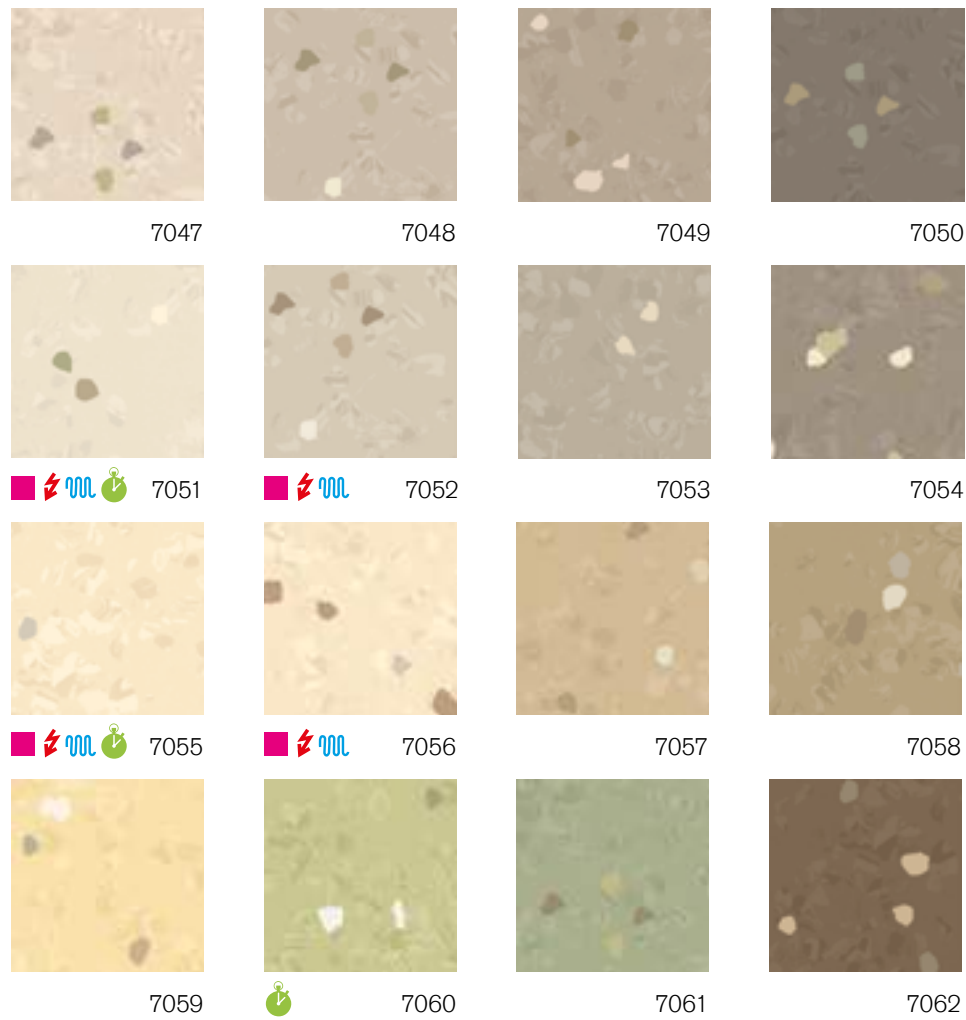
© Stephan Falk



noraplan® signa

A changing base colour consisting of three harmoniously matched colour components and characteristic granule inclusions with a smooth or reflection-breaking surface.





noraplan® signa · smooth surface

noraplan® signa

48

Art. 1462

~1.22 m x 15.0 m

Art. 2462

~610 mm x 610 mm

15 □ = 5.58 m² in one carton



nora® profile connection dimension: A + U

Slip resistant R9

noraplan® signa

17

Art. 1463

~1.22 m x 12.0 m

Art. 2463

~610 mm x 610 mm




10 □ = 3.72 m² in one carton



nora® profile connection dimension: D + U

Slip resistant R9

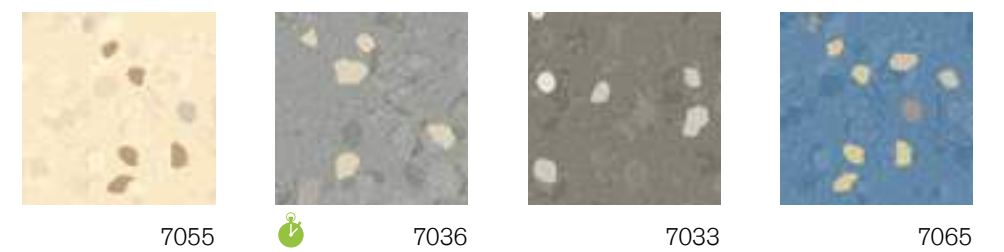
These colours can also be delivered as:

-  noraplan® signa ed
electrostatically dissipative, page 59
-  noraplan® signa acoustic
footfall-sound-absorbing 20 dB, page 62
-  noraplan® signa nTx
self-adhesive, page 84

Additional information on nora® nTx can also be found
at ntx.nora.com.

Special colours and dimensions (e.g. short rolls) are
available on request.
Please ask for minimum quantities and delivery times.

noraplan® signa · reflection-breaking surface



noraplan® signa

4

Art. 1690

~1.22 m x 15.0 m

Art. 2690

~610 mm x 610 mm

15 □ = 5.58 m² in one carton



nora® profile connection dimension: A + U

Slip resistant R10



Kindergarten Zusmarshausen, Germany

© Markus Bachmann



noraplan® **valua**

Lively and flowing design with an organic texture in 24 colours inspired by nature and highlighted by a linear surface structure.



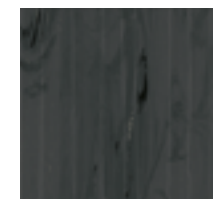
6708



6709



6710



6711



6712



6713



6714



6715



6716



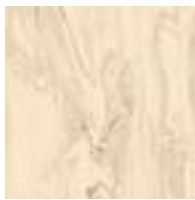
6717



6718



6719



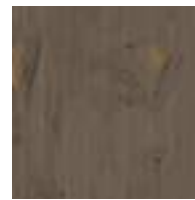
6720



6721



6722



6723



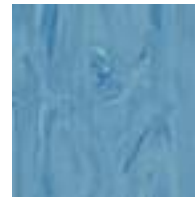
6724



6725



6726



6727



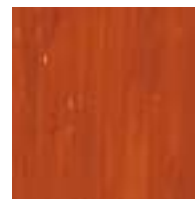
6728



6729



6730



6731



Art. 174A

~1.22 m x 15.0 m

~2.0 mm

nora® profile connection dimension: A + U
Slip resistant R9

Also available as noraplan® valua nTx, page 80

Additional information on nora® nTx can also be found at nTx.nora.com.



Art. 175A

~1.22 m x 12.0 m

~3.0 mm

nora® profile connection dimension: D + U
Slip resistant R9

Special colours and dimensions (e.g. short rolls) are available on request. Please ask for minimum quantities and delivery times.



Daycare Drachenreiter, Berlin, Germany

© Werner Huthmacher



noraplan® stone

Discreet, non-directional scatter design available with both reflection-breaking and smooth surfaces.

noraplan® stone · smooth surface



6601



1146



1862



2306



6613



6614



6607



1279

noraplan® stone



Art. 1600

~1.22 m x 15.0 m

Art. 2600

~610 mm x 610 mm

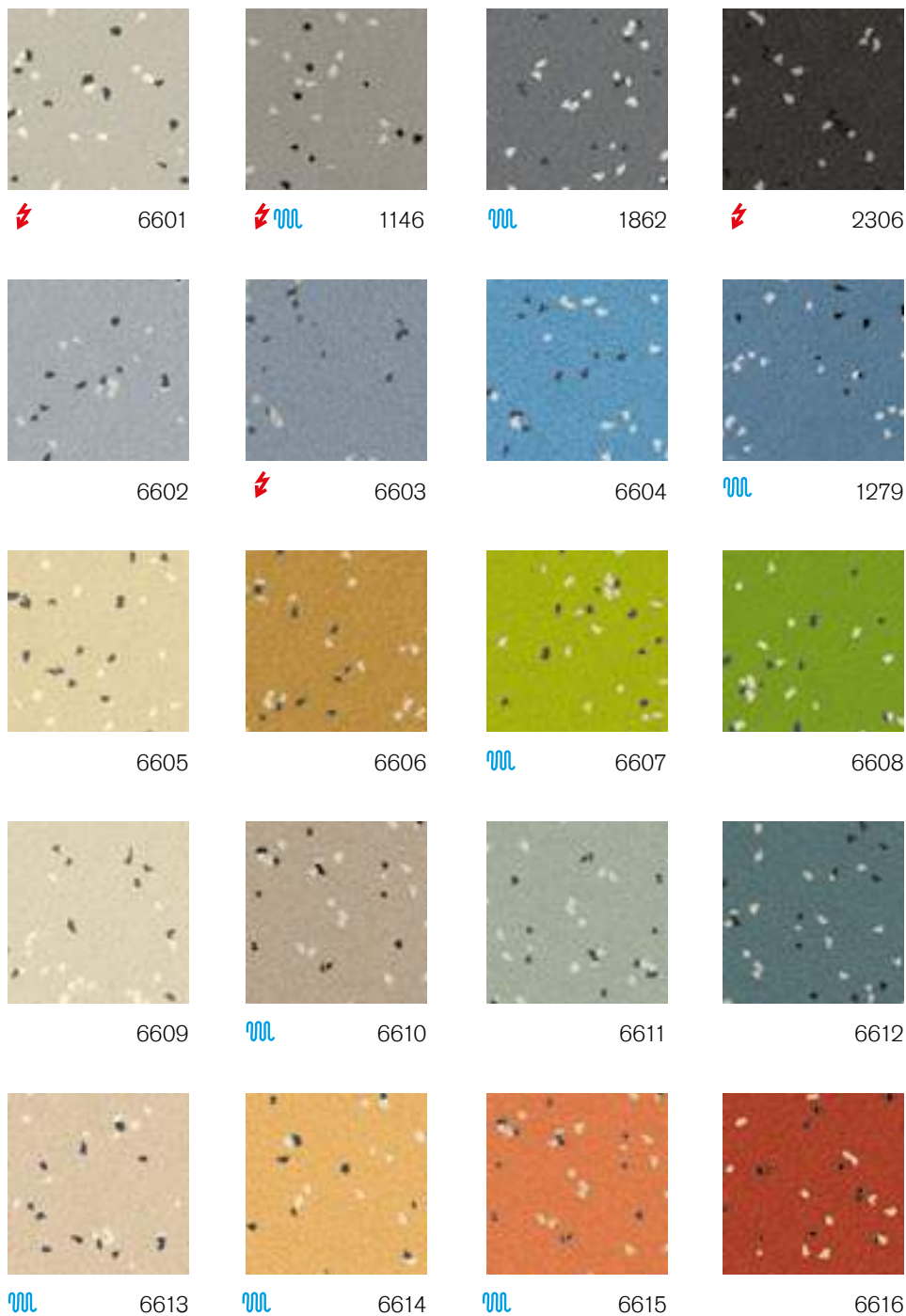
15 □ = 5.58 m² in one carton

~2.0 mm

nora® profile connection dimension: A + U

Slip resistant R9

noraplan® stone · reflection-breaking surface



noraplan® stone

20

Art. 149

~1.22 m x 15.0 m

Art. 249

~610 mm x 610 mm

15 = 5.58 m² in one carton

~2.0 mm

nora® profile connection dimension: A + U

Slip resistant R10

These colours can also be delivered as:

noraplan® stone ed
electrostatically dissipative, page 60

noraplan® stone acoustic
football-sound-absorbing 20 dB, page 63

Also available as noraplan® stone nTx, page 80

Additional information on nora® nTx can also be found at ntx.nora.com.

Special colours and dimensions (e.g. short rolls) are available on request.

Please ask for minimum quantities and delivery times.



One-coloured with a smooth surface.



2446



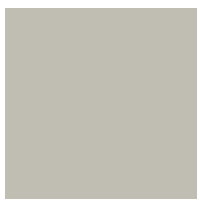
6175



2140



2647



2454



1810



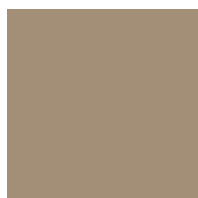
2457



2451



6176



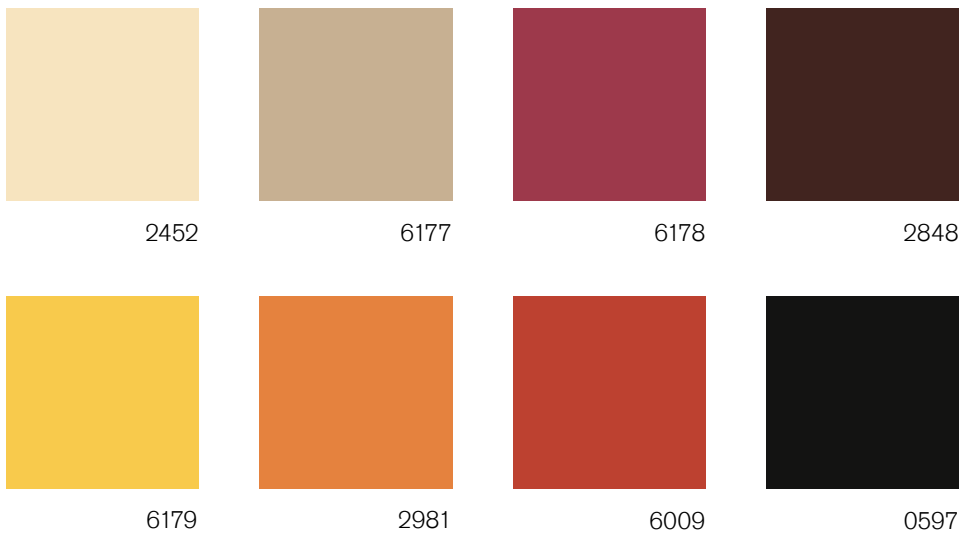
2144



0131



6129

**noraplan® uni**
Art. 1461

~1.22 m x 12.0 m

Art. 2461

~610 mm x 610 mm

 15 = 5.58 m² in one carton

~2.0 mm

nora® profile connection dimension: A + U

Slip resistant R9

Special colours and dimensions (e.g. short rolls) are available on request.

Please ask for minimum quantities and delivery times.



Library Rottenburg, Germany



noraplan® unita

A perfect combination of permanently resilient rubber and randomly dispersed granite chips with a smooth surface. The fine scatter of chips in noraplan® unita lends it a discreet appearance. The design is deliberately purist and simple.



red dot design award
winner 2012



7101



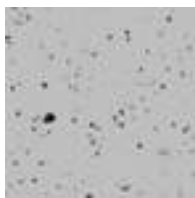
7102



7103



7104



7105



7106



7107



7108



7109



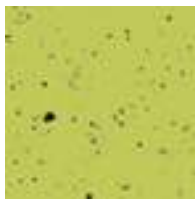
7110



7111



7112



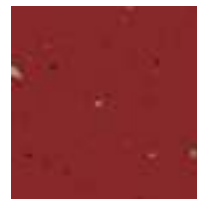
7113



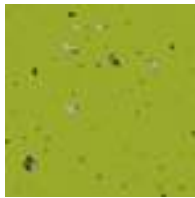
7114



7115



7116



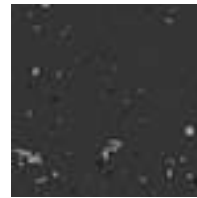
7117



7118



7119




7120

noraplan® unita

 20

Art. 1640

 ~1.22 m x 15.0 m

 ~2.0 mm

nora® profile connection dimension: A + U

Slip resistant R9

Please note: Granite is a natural product. For this reason, slight colour deviations may occur in the stone even within the same batch.

Special colours and dimensions (e.g. short rolls) are available on request. Please ask for minimum quantities and delivery times.



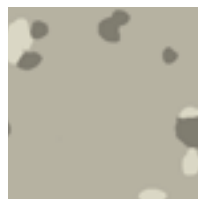


noraplan® eco

Design with large, contrasting granules with a smooth surface.



6620



6621



6622



6623



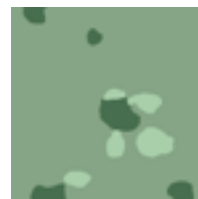
6624



6625



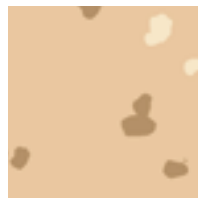
6626



6627



6628



6629



6630



6631



6632



6633



6634



6635

noraplan® eco

16

Art. 1490

~1.22 m x 15.0 m

Art. 2490

~610 mm x 610 mm

15 □ = 5.58 m² in one carton

~2.0 mm

nora® profile connection dimension: A + U

Slip resistant R9

Also available as noraplan® eco nTx, page 80

Additional information on nora® nTx can also be found at ntx.nora.com.**Special colours and dimensions (e.g. short rolls) are available on request.****Please ask for minimum quantities and delivery times.**

Laoshan School, Qingdao, China



noraplan® ultra grip

Safety floor covering with increased slip resistance, TRRL Pendulum Test 36+ in the wet and RZ value 20.1. Slip resistance R11 according to DIN 51 130 and DGUV 108-003.



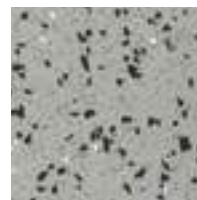
6014



6015



6016



6017



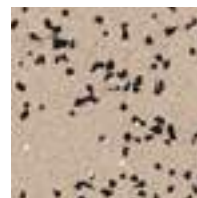
6018



6019



6020



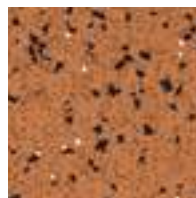
6021



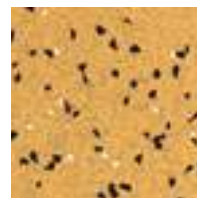
6023



6024



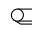
6027



6029

noraplan® ultra grip

Design with discretely dispersed granite chips

 12**Art. 1569** ~1.20 m x 15.0 m ~2.0 mm

nora® profile connection dimension: A + U

Resists most oils and greases

Slip resistant R11

Special colours and dimensions (e.g. short rolls) are available on request.
Please ask for minimum quantities and delivery times.



nora® special floorings

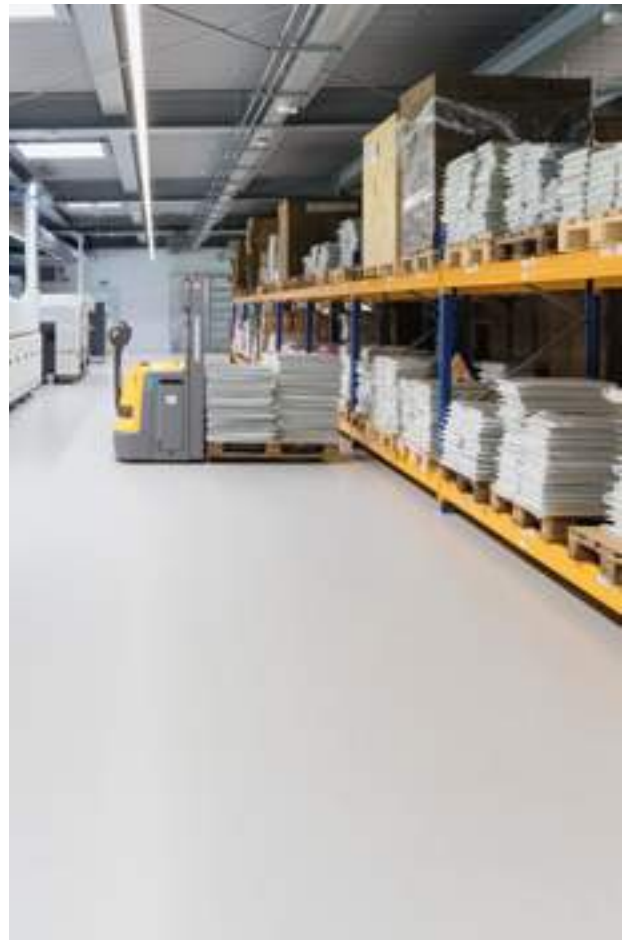
We have developed our special floorings for areas subject to special technical standards and requirements. These include e.g. acoustic coverings with an impact sound improvement index of 20 dB, electrostatically dissipative or conductive qualities, or highly specialised solutions for ice rinks, golf facilities, and many more. With noracare® we also offer a special sheet flooring for areas with extraordinary demands on hygienic cleaning and maintenance as well as stain and chemical resistance. Get to know the range of designs and variants on the following pages.





Hospital Aichach, Germany

© Werner Huthmacher



Seitec Elektronik GmbH, Elsteraue, Germany

© Dirk Wilhelmy



Agilent Technologies Deutschland GmbH & Co. KG,
Waldbronn, Germany © Atelier Dirk Altenkirch



Ries Apotheken, Nördlingen, Germany

© Oliver Heinemann

norament® 975 LL

Removable floor covering that can be quickly installed with the help of an appropriate tackifier. Once fitted it can be used immediately. Particularly suitable for raised access panels, existing old floor coverings and for temporary installations.

norament 975 LL contains 30% recycled content.



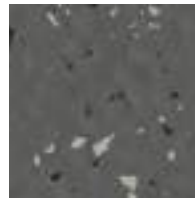
norament® 975 LL · grano design Hammerblow surface



5302



5303



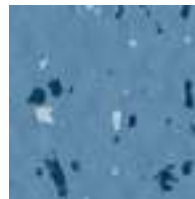
5304



5329



5314



5318

norament® 975 LL



Art. 975 LL/1880

□ ~1000 mm x 1000 mm



nora® profile connection dimension: E + U
Slip resistant R9

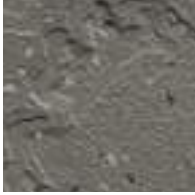
**Special colours are available on request.
Please ask for minimum quantities and
delivery times.**

The differences between the design of norament® 975 LL and the standard product norament® 926 grano are production-related. Please request individual colour samples of the required norament® product.

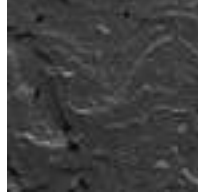


norament® 975 LL · serra design

Relief structure



4930



4929

norament® 975 LL



Art. 975 LL/3042

□ ~1000 mm x 500 mm



nora® profile connection dimension: E + U
Slip resistant R10

**Special colours are available on request.
Please ask for minimum quantities and
delivery times.**

Please note: We supply tiles with chamfered edges on request (Art. 3043).

As a genre loose laid flooring may not be the best solution under certain conditions. We are happy to advise you if the floor in your room is subject to:

- High or regular exposure to moisture
- High or frequently occurring dynamic pressure loads (e.g. using forklifts)
- High temperature fluctuations



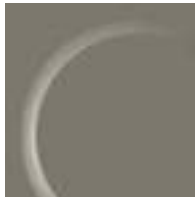
norament® 992/992 grano

For areas with extreme requirements
(e.g. ice rinks, golf clubs, animal stables, etc.).

norament 992 contains at least 37% recycled content.



norament® 992 · round pastille



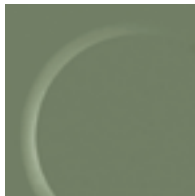
0882



5337



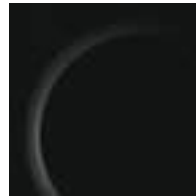
0749



2070



0319



0702

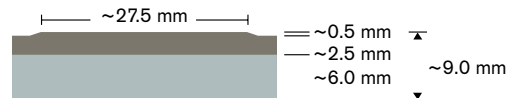
norament® 992



6

Art. 992/1956

□ ~1002 mm x 1002 mm

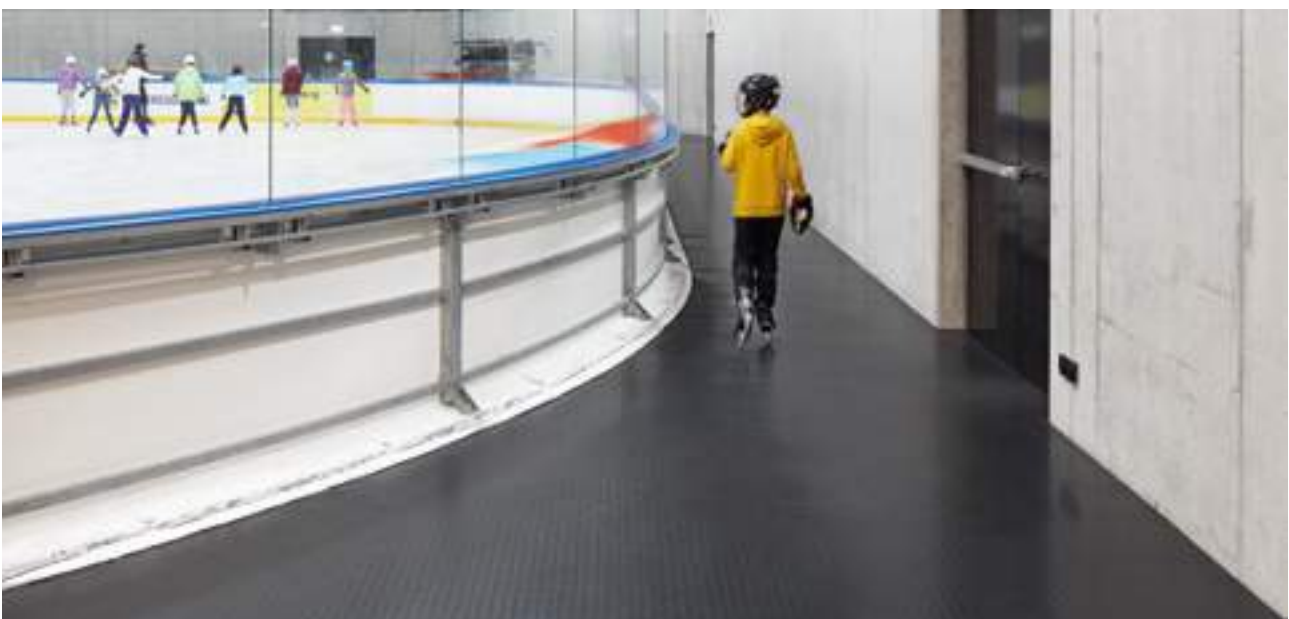


nora® profile connection dimension: N

Slip resistant R9

Special colours are available on request.

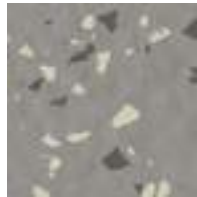
Please ask for minimum quantities and delivery times.



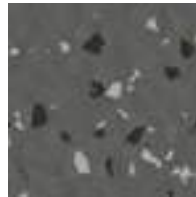
norament® 992 grano · hammerblow surface



5302



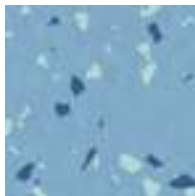
5303



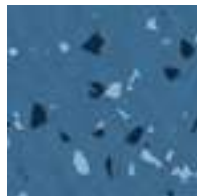
5304



5308



5317



5319

norament® 992 grano



6

Art. 992 grano/1955

□ ~1002 mm x 1002 mm



~3.0 mm

~6.0 mm

~9.0 mm

nora® profile connection dimension: N

Slip resistant R9

Special colours are available on request.

Please ask for minimum quantities and delivery times.



SAP-Arena, Mannheim, Germany

norament® and noraplan® ec ⚡



Electrostatically conductive “ec” floorings for optimum ESD protection of electronic devices and equipment. Suitable for areas with a risk of explosions.

norament® 927 grano ec



4617

norament® 927 grano ec



1

Art. 927 grano ec/1880

□ ~1004 mm x 1004 mm

~3.5 mm

nora® profile connection dimension: E + U

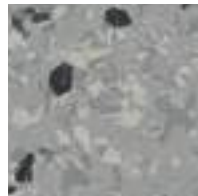
Slip resistant R9

Suitable for fork-lift-truck areas.
Largely resistant to acids and alkalis.

noraplan® astro ec



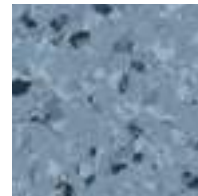
6102



6007



6114



6056

noraplan® astro ec



4

Art. 166C

⊞ ~1.22 m x 12.0 m

Art. 266C

□ ~610 mm x 610 mm

15 □ = 5.58 m² in one carton

~2.0 mm

nora® profile connection dimension: A + U

Slip resistant R9

Special dimensions (e.g. short rolls) are available on request.
Please ask for minimum quantities and delivery times.

norament® ed ⚡



Electrostatically dissipative “ed” floorings for optimum ESD protection of electronic devices and equipment. Protect against electrical shock, resist most oils and greases and are suitable for forklift truck areas.

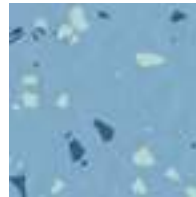
norament® 928 grano ed



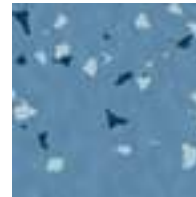
5301



5306



5317



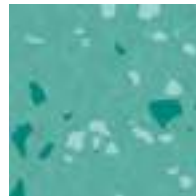
5318



5329



5325



5321



5304

norament® 928 grano ed



Art. 928 grano ed/1880

□ ~1002 mm x 1002 mm



nora® profile connection dimension: E + U
Slip resistant R9

norament® 928 grano ed



Art. 928 grano ed/1911

□ ~610 mm x 610 mm



nora® profile connection dimension: E + U
Slip resistant R9

Special colours are available on request.

Please ask for minimum quantities and delivery times.

Quick-Installation of nora® ESD floorings

nora ESD floorings can be installed with the unique dry adhesive nora dryfix ed. It accelerates the installation with a high reliability and reduces downtimes significantly. More information can be found on page 92.

noraplan® ed ⚡

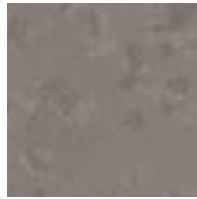


Electrostatically dissipative “ed” floorings for optimum ESD protection of electronic devices and equipment. Protect against electrical shock, resist most oils and greases.

noraplan® sentica ed



6520



6521



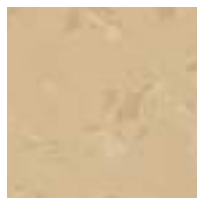
6522



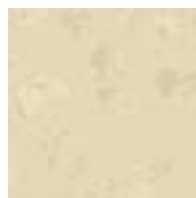
6523



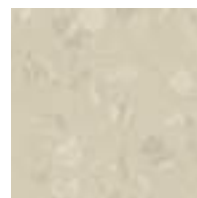
6508



6509



6504



6505



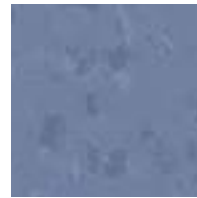
6517



6513



6529



6530

noraplan® sentica ed



Art. 1702

~1.22 m x 15.0 m

Art. 2702

~610 mm x 610 mm

15 □ = 5.58 m² in one carton



nora® profile connection dimension: A + U

Slip resistant R9

noraplan® sentica ed



Art. 1703

~1.22 m x 12.0 m



nora® profile connection dimension: D + U

Slip resistant R9

Please note: The colours 6504, 6505 and 6508 are only recommended for areas with a low incidence of stains and dirt (e.g. **not** for OP theatres or intensively frequented areas).

Please note: noraplan® ed floorings must be sealed with nora® joint-sealing compound.

Special colours and dimensions (e.g. short rolls) are available on request.
Please ask for minimum quantities and delivery times.

noraplan® signa ed



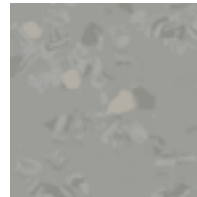
7031



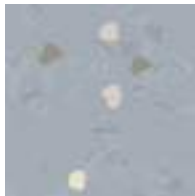
7033



7035



7036



7044



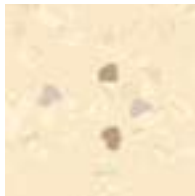
7045



7051



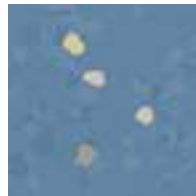
7052



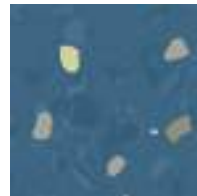
7055



7056



7065



7066



7067



7076

noraplan® signa ed



Art. 1390

~1.22 m x 15.0 m

Art. 2390

~610 mm x 610 mm

15 □ = 5.58 m² in one carton



nora® profile connection dimension: A + U

Slip resistant R9

Please note: noraplan® ed floorings must be sealed with nora® joint-sealing compound.

noraplan® signa ed



Art. 1523

~1.22 m x 12.0 m



nora® profile connection dimension: D + U

Slip resistant R9

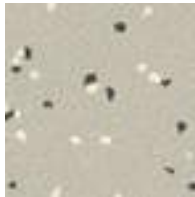
Special colours and dimensions (e.g. short rolls) are available on request.
Please ask for minimum quantities and delivery times.

noraplan® ed ⚡



Electrostatically dissipative “ed” floorings for optimum ESD protection of electronic devices and equipment. Protect against electrical shock, resist most oils and greases.

noraplan® stone ed · reflection-breaking surface



6601



1146



2306



6603

noraplan® stone ed



4

Art. 129

~1.22 m x 15.0 m

Art. 229

~610 mm x 610 mm

15 □ = 5.58 m² in one carton

~2.0 mm

nora® profile connection dimension: A + U

Slip resistant R10

Please note: noraplan® ed floorings must be sealed with nora® joint-sealing compound.

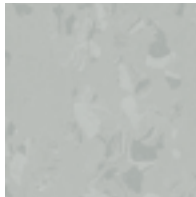
Special colours and dimensions (e.g. short rolls) are available on request.
Please ask for minimum quantities and delivery times.



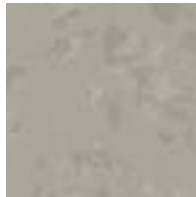
noraplan® acoustic

For high footfall sound absorption with a footfall sound absorption improvement of 20 dB.

noraplan® sentica acoustic



6524



6520



6521



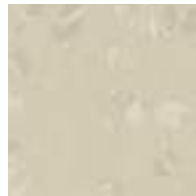
6522



6508



6513



6505



6510



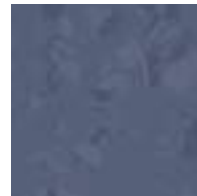
6516



6517



6530



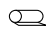
6531

noraplan® sentica acoustic



12

Art. 1705

 ~ 1.22 m x 12.0 m



nora® profile connection dimension: F + U

Slip resistant R9

Please note: noraplan® acoustic floorings must be sealed with nora® hot welding rod.

Special colours and dimensions (e.g. short rolls) are available on request.
Please ask for minimum quantities and delivery times.

noraplan® acoustic

For high footfall sound absorption with a footfall sound absorption improvement of 20 dB.

noraplan® signa acoustic



7055



7056



7032



7033



7051



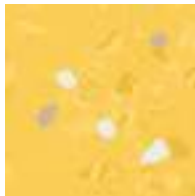
7052



7035



7036



7071



7072



7067

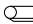


7065

noraplan® signa acoustic

 12

Art. 1420

 ~ 1.22 m x 12.0 m

 ~1.6 mm  ~4.0 mm
 ~2.4 mm

nora® profile connection dimension: F + U

Slip resistant R9

Please note: noraplan® acoustic floorings must be sealed with nora® hot welding rod.

Special colours and dimensions (e.g. short rolls) are available on request.
Please ask for minimum quantities and delivery times.

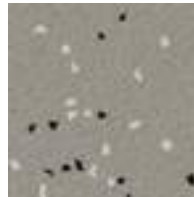
noraplan® stone acoustic · reflection-breaking surface



6613



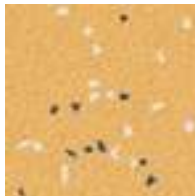
6610



1146



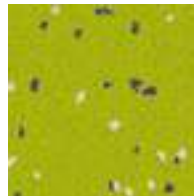
1862



6614



6615



6607



1279

noraplan® stone acoustic



Art. 148

~1.22 m x 12.0 m



nora® profile connection dimension: F + U

Slip resistant R10

Please note: noraplan® acoustic floorings must be sealed with nora® hot welding rod.

Special colours and dimensions (e.g. short rolls) are available on request. Please ask for minimum quantities and delivery times.



College Thomas More Mechelen, Belgium

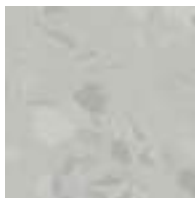
© Bart Gosselin

noracare®

Special sheet flooring for areas with extraordinary demands on hygienic cleaning and maintenance as well as stain and chemical resistance.

noracare® seneo

Single-coloured design with iridescent marbled colour granules, which are harmoniously matched to the base colour with minimal contrast. Close up, the 24 colours of the noracare® seneo colour palette create a perceptible pattern, while from a distance they appear almost uni-coloured.



7201



7202



7203



7204



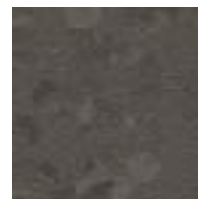
7205



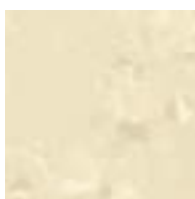
7206



7207



7208



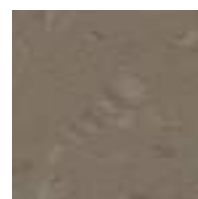
7209



7210



7211



7212



7213



7214



7215



7216



7217



7218



7219



7220



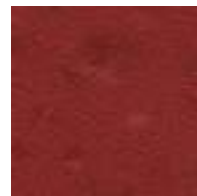
7221



7222



7223



7224

noracare® seneo

24

Art. 133E

~1.22 m x 15.0 m

~2.0 mm

nora® profile connection dimension: A + U

Slip resistant R10

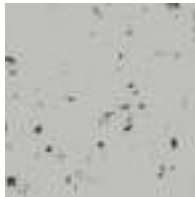
Special colours and dimensions (e.g. short rolls) are available on request. Please ask for minimum quantities and delivery times.



noracare®

noracare® uneo

Single-coloured design with randomly scattered granite splinters, with a smooth surface. The harmoniously coordinated colour palette of noracare® uneo lends your rooms an unmistakable character.



7001



7002



7003



7004



7005



7006



7007



7008



7009



7010



7011



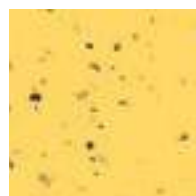
7012



7013



7014



7015



7016



7017



7018



7019



7020




7021

noracare® uneo

 21

Art. 140D

 ~1.22 m x 15.0 m

 ~2.0 mm

nora® profile connection dimension: A + U

Slip resistant R10

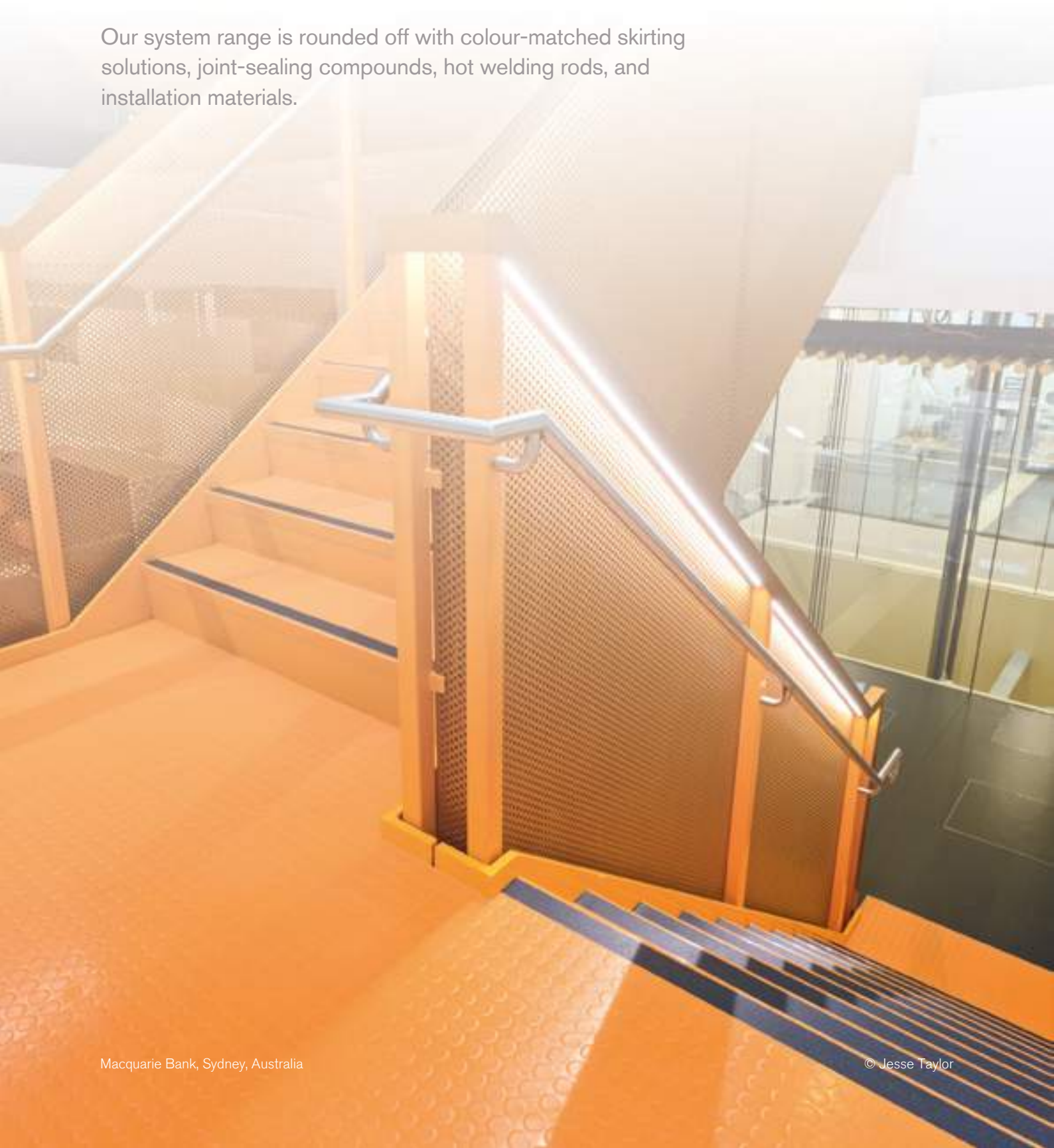
Special colours and dimensions (e.g. short rolls) are available on request. Please ask for minimum quantities and delivery times.



nora® stairwell solutions

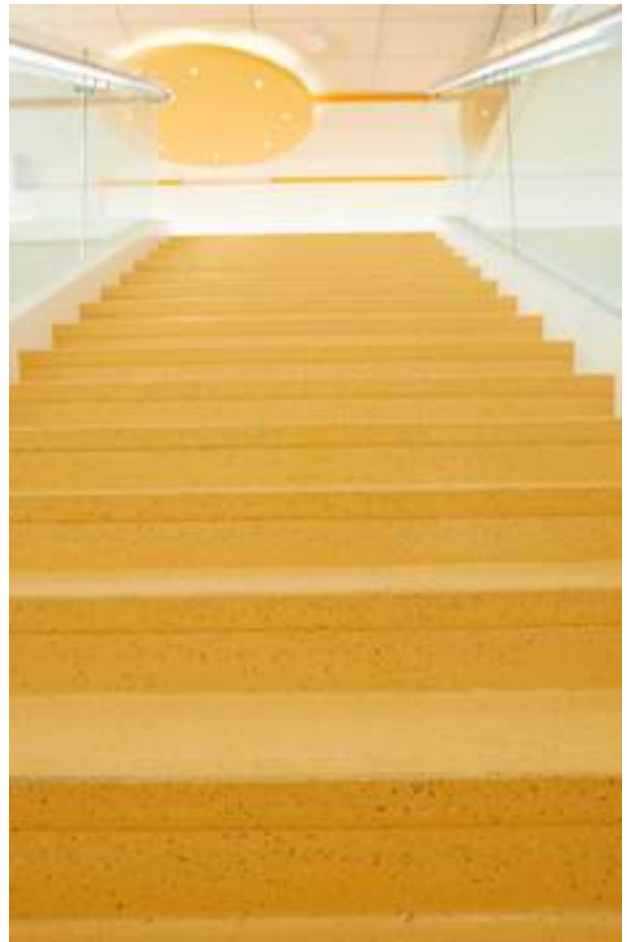
Individual requirements for stairwells are best fulfilled by our extensive system programme, from the tailored norament® stairtread with integrated pre-shaped stair nosing, riser, and tread to individual combinations of stair angles, stair nosings, and integrated safety stripes.

Our system range is rounded off with colour-matched skirting solutions, joint-sealing compounds, hot welding rods, and installation materials.





© nora



ECNU affiliated bilingual school, Shanghai, China

© nora



Professional School Deggendorf, Germany

© Markus Bachmann



Schubart Grammar School, Aalen, Germany

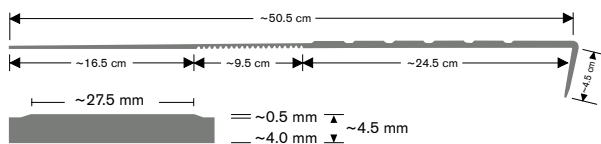
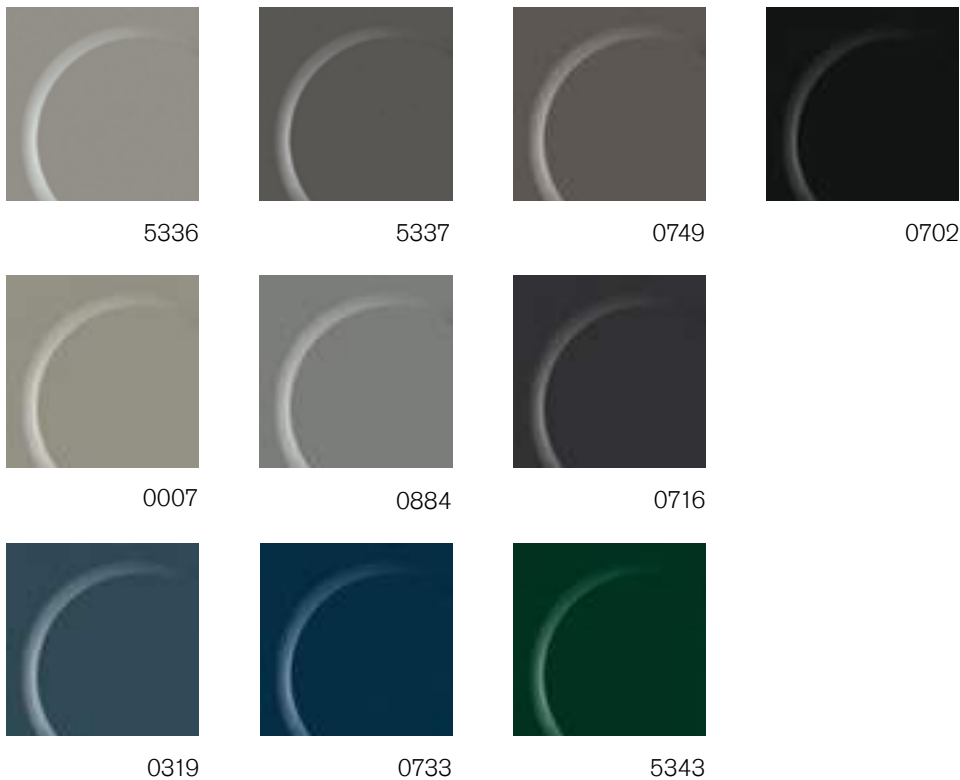
© Valentin Schmied / Liebel Architekten BDA

norament® stairtreads

Pre-shaped stair coverings consisting of stair nosing, riser and tread all in one piece for straight steps with right-angled edge. For extremely heavy-traffic stairwell areas.

Stairtread norament® 926

One-coloured with classic round pastille. Improves footfall sound absorption by 12 dB.



Stairtread norament® 926

10

Art. 926/465 – width 1 285 mm

Art. 926/466 – width 1 614 mm

Art. 926/467 – width 2 004 mm



Stairtread norament® 926 grano

Granular design rich in contrast with a hammerblow surface. Improves footfall sound absorption by 12 dB.



5301



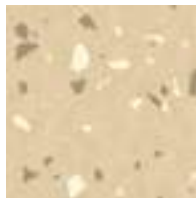
5302



5303



5304



5313



5314



5315



5308



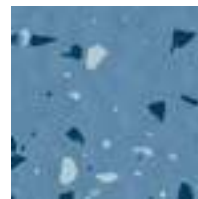
5329



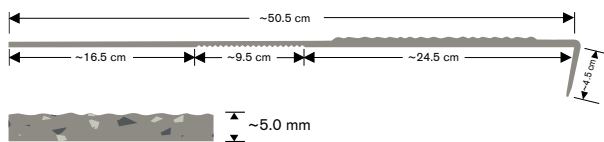
5325



5317



5318



Stairtread norament® 926 grano

12

Art. 926 grano/479 – width 1 285 mm

Art. 926 grano/468 – width 1 614 mm

Art. 926 grano/469 – width 2 004 mm



Stairtread norament® 926 satura

Tone-in-tone granular design with a hammerblow surface.
Improves footfall sound absorption by 12 dB.



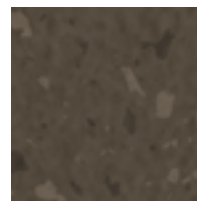
5102



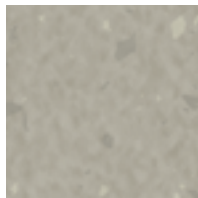
5103



5107



5108



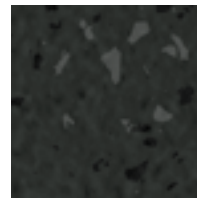
5110



5114



5115



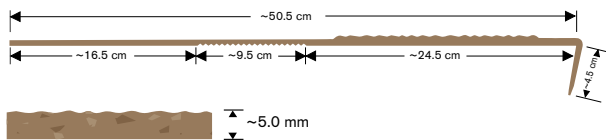
5116



5121



5127



Stairtread norament® 926 satura

10

Art. 926 satura/479 – width 1 285 mm

Art. 926 satura/468 – width 1 614 mm

Art. 926 satura/469 – width 2 004 mm



Stairtread norament® 926 arago

Flat, direction-oriented relief structure with fine grain design and modern marbling. Improves footfall sound absorption by 12 dB.



5171



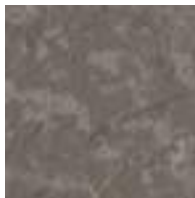
5172



5175



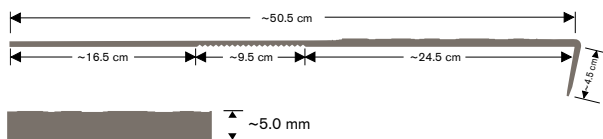
5177



5178



5179



Stairtread norament® 926 arago

6

Art. 926 arago/3170 – width 1 285 mm

Art. 926 arago/3171 – width 1 614 mm

Art. 926 arago/3172 – width 2 004 mm

Variations in colour and design, even within one production batch, define the product's aesthetic character.



norament® stairtreads with signal or safety stripes

norament® stairtreads can be additionally equipped with the following signal or safety stripes:



0122



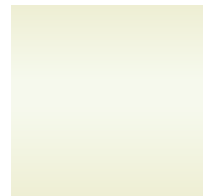
0895



6014



6029



phosphorescent

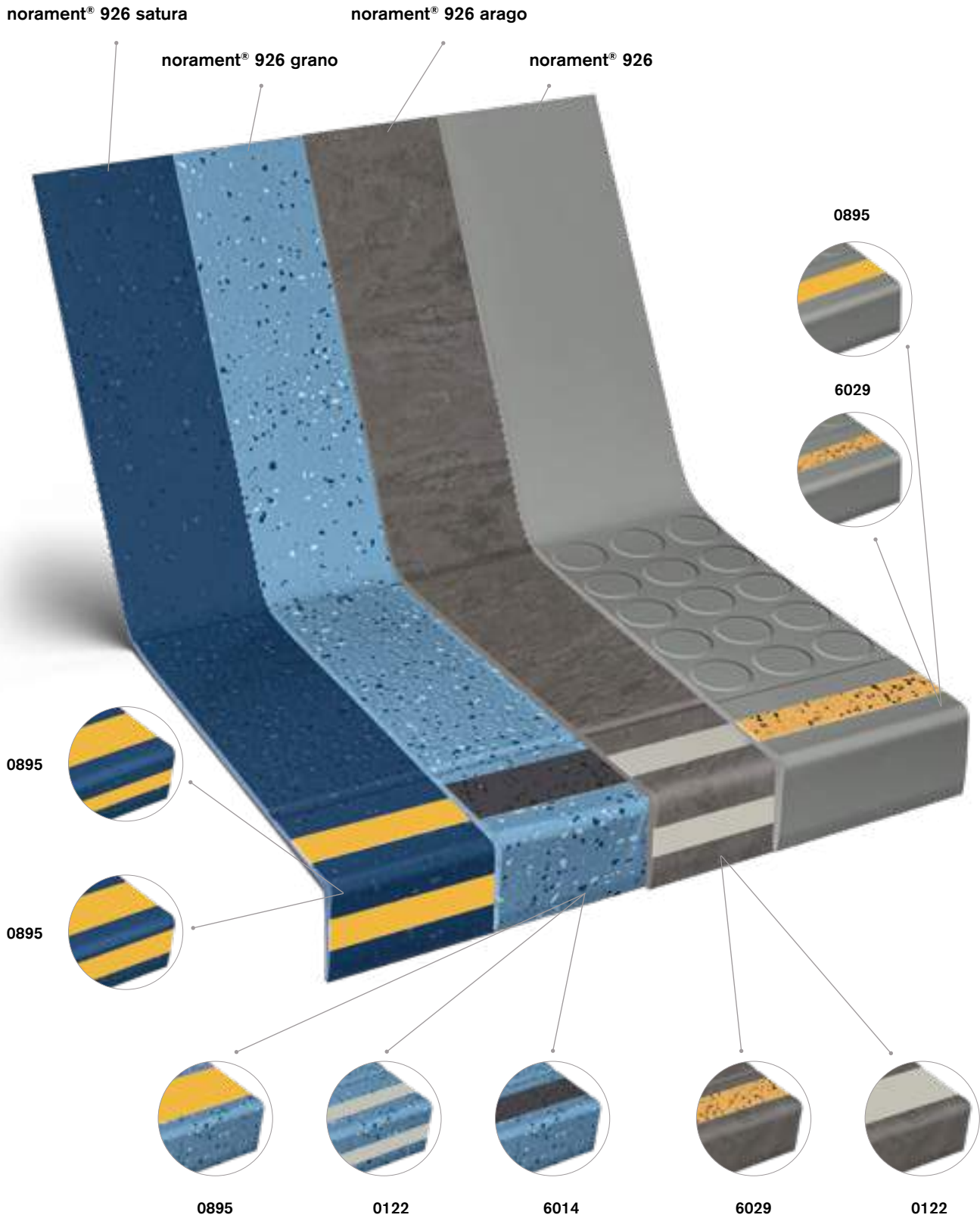
- Signal stripes uni, in widths of 2, 3, 4 or 5 cm (5 cm only available for stairtread norament® 926 arago or for stairtreads with hammerblow surface) in the colours 0122 light grey and 0895 signal yellow, integrated into the tread area. Also available in widths of 2 or 3 cm set into the vertical part of the stair nosing.
- Safety stripes ultra grip for increased slip resistance in widths of 2, 3, 4 or 5 cm (5 cm only available for stairtread norament® 926 arago or for stairtreads with hammerblow surface) in the colours 6029 yellow and 6014 grey, integrated into the tread area. Also available in widths of 2 or 3 cm set into the vertical part of the stair nosing.
- Signal stripes, yellow, phosphorescent in accordance with DIN 67510, in a width of 2 cm, integrated into the tread area of the stair nosing.

Signal and safety stripes in other widths and colours are available on request. Please ask for minimum quantities and delivery times.



Most frequently used stripe combinations

Further options are available.




nora® stair accessories

The nora accessory range is made of rubber matched to suit the respective norament and noraplan floor coverings. They can also be used in combination with other types of flooring. nora profiles are impact and shock resistant and do not shrink. They contain no phthalate plasticisers and retain their functional reliability for many years.

nora® stair nosings

With plug-in lip for quick and easy installation on all types of staircases.

1 T 5049 2 T 5044
 8

Delivery in 5 fixed lengths possible:
 1.00/1.25/1.65/2.0/2.50 r.m.

3 TA 1203
 Colour: Aluminium silver
 anodised

Aluminium stair nosing for stairs
 made from norament® coverings
 Delivery unit: 2.7 r.m.

0702	0749	5301	5310
0716	0884	5305	6179

nora® stair angles


For the smooth finishing of right-angled stairs to the wall and banister side.

4 TW 7005 U 5 TW 7006 U
 6 TG 7003 U 7 TG 7004 U
 32

Delivery unit: pieces

0007	0733	2786	5110	5121	5303	5315	5329
0319	0749	5103	5114	5127	5304	5317	5343
0702	0882	5107	5115	5301	5313	5318	6507
0716	0884	5108	5116	5302	5314	5325	6522

nora® skirting and stringer profile

8 S 1008 U
 32

Multi-purpose skirting
 Delivery unit: rolls of 10 r.m.
 Connection profile for nora® stair angles "TW"

9 A 5013 U
 32

For landings and ramps
 Delivery unit: in units of 2.5 r.m.
 Connection profile for nora® stair angles "TG"

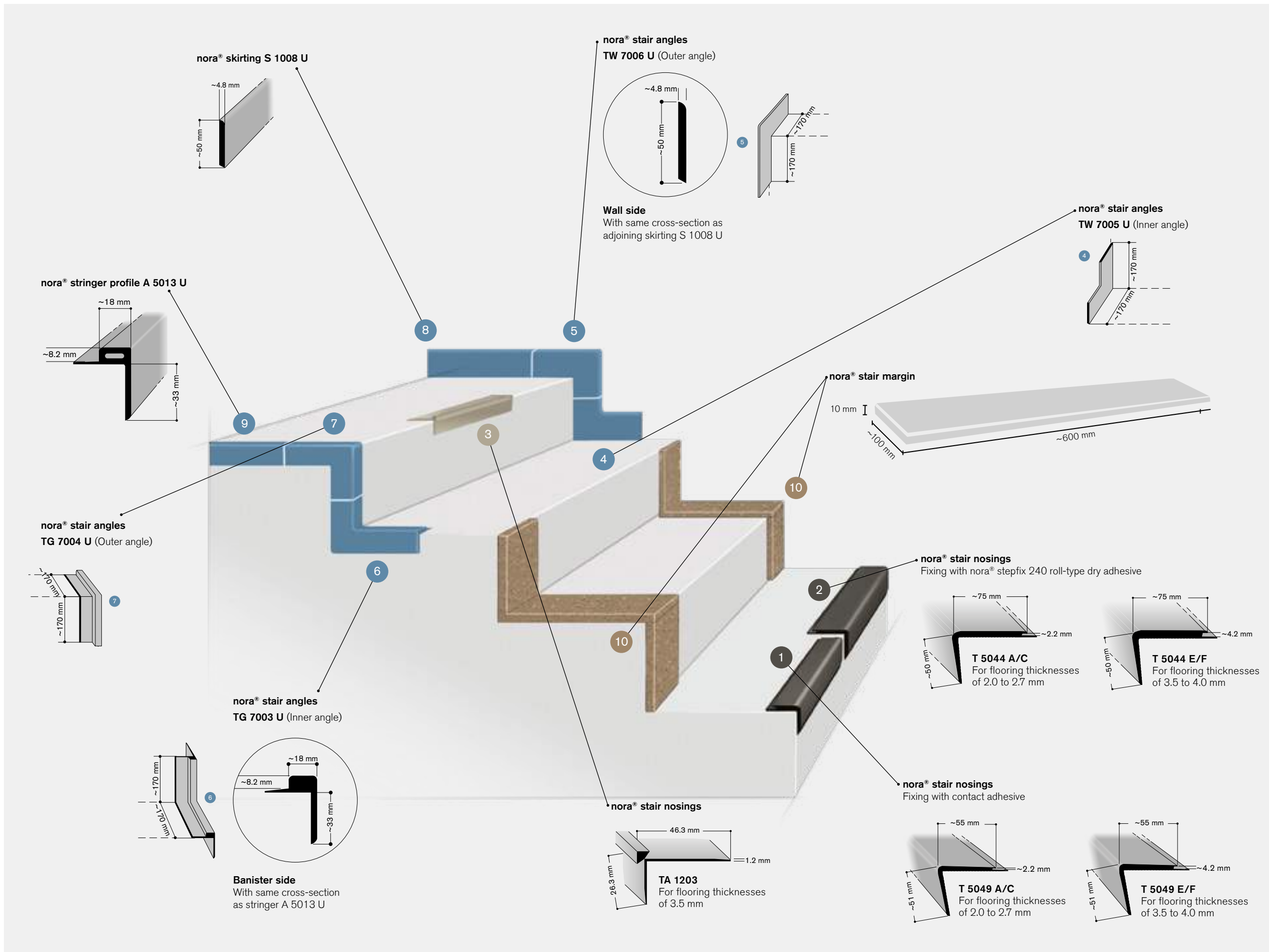
nora® stair margin

10
 2

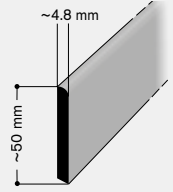
For wall and banister side. Hammerblow surface with granular design.

Art. 819
 ~600 mm x 100 mm
 Thickness 10 mm
 Supplied as: pieces

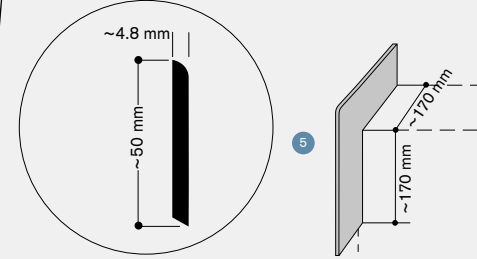
5304	5315
------	------



nora® skirting S 1008 U

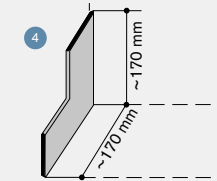


nora® stair angles
TW 7006 U (Outer angle)

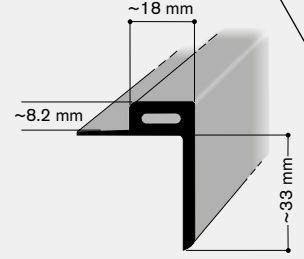


Wall side
With same cross-section as adjoining skirting S 1008 U

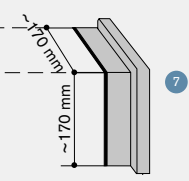
nora® stair angles
TW 7005 U (Inner angle)



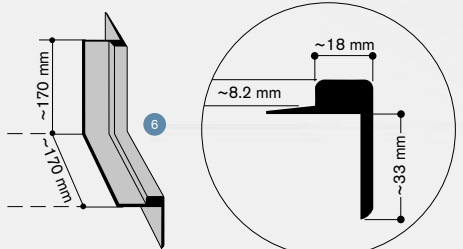
nora® stringer profile A 5013 U



nora® stair angles
TG 7004 U (Outer angle)



nora® stair angles
TG 7003 U (Inner angle)



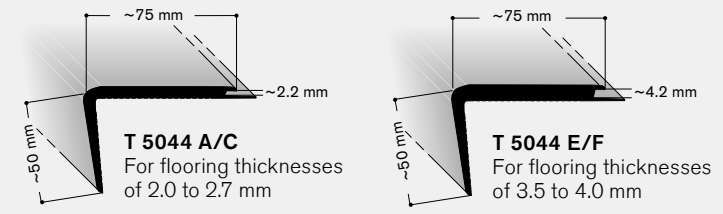
Banister side
With same cross-section as stringer A 5013 U

nora® stair margin



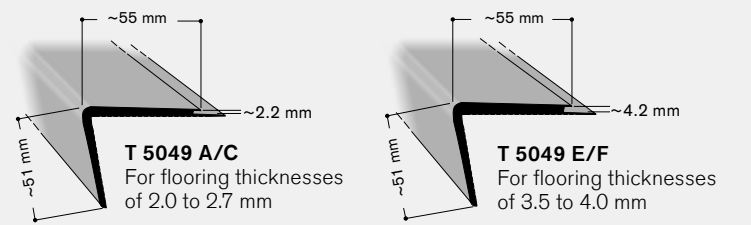
nora® stair nosings

Fixing with nora® stepfix 240 roll-type dry adhesive

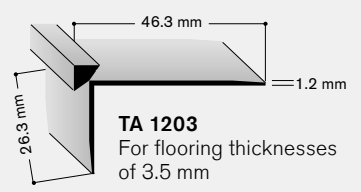


nora® stair nosings

Fixing with contact adhesive



nora® stair nosings



nora® stepfix 240

Special roll-type dry adhesive

For quick installation of norament® stairtreads, stairwell installations with nora® stair nosing T 5044 and nora® stair margin.

A cost-effective innovation in adhesives. Suitable for new builds and renovation projects. Advantages: 3-5 times faster to install, odourless, can be walked on immediately, economical and reliable thanks to excellent bonding performance.

Art. 907

Delivery unit: 1 roll of 50 r.m. in one carton

nora® special range for stairwell areas

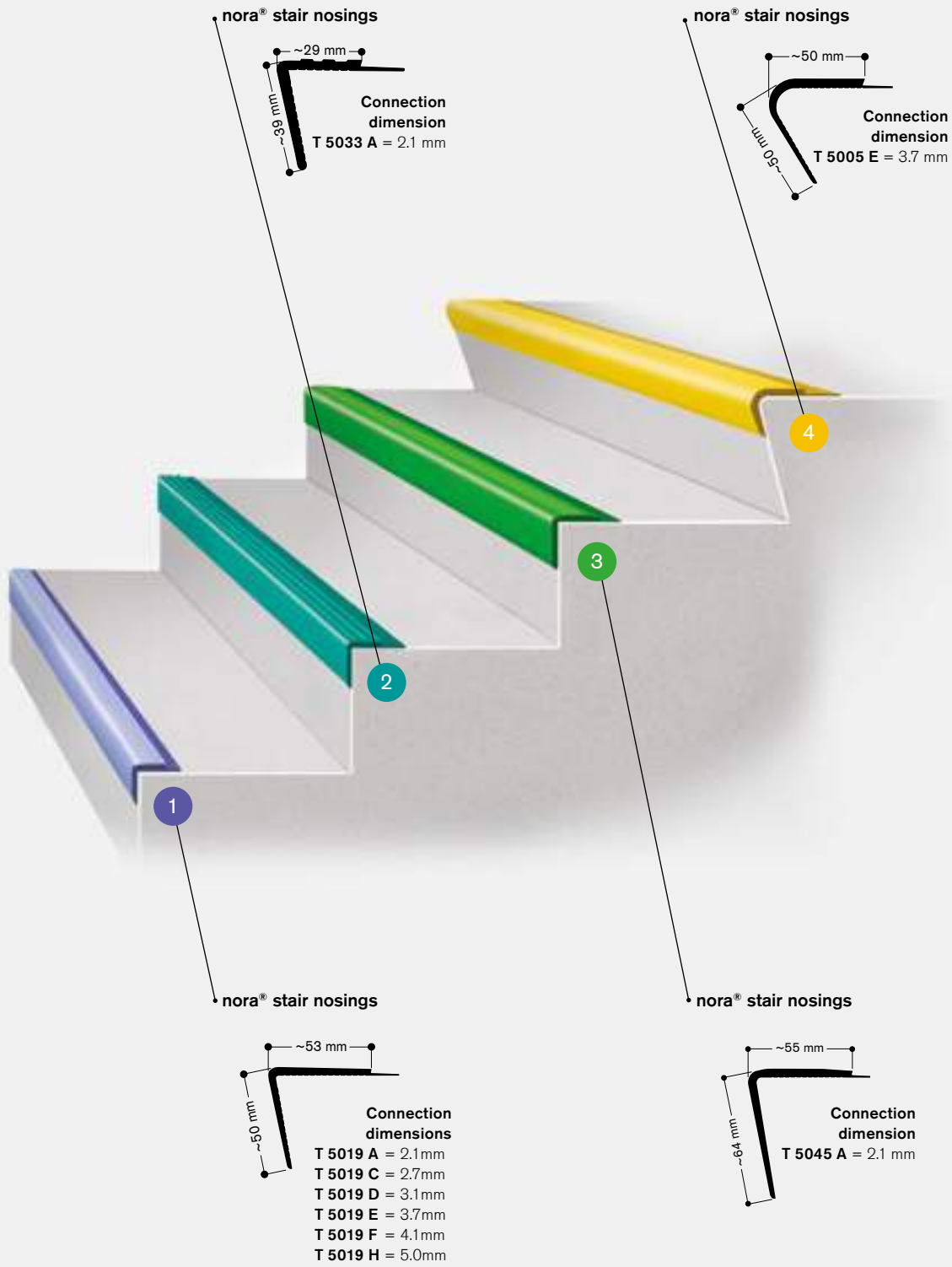
The special range offers profiles with different cross-sections for further applications. The profiles shown here are examples only. Further individual designs are available on request. Delivery units and minimum order quantities on request.

nora® stair nosings

T 5019/T 5033/T 5045/T 5005



nora® special range

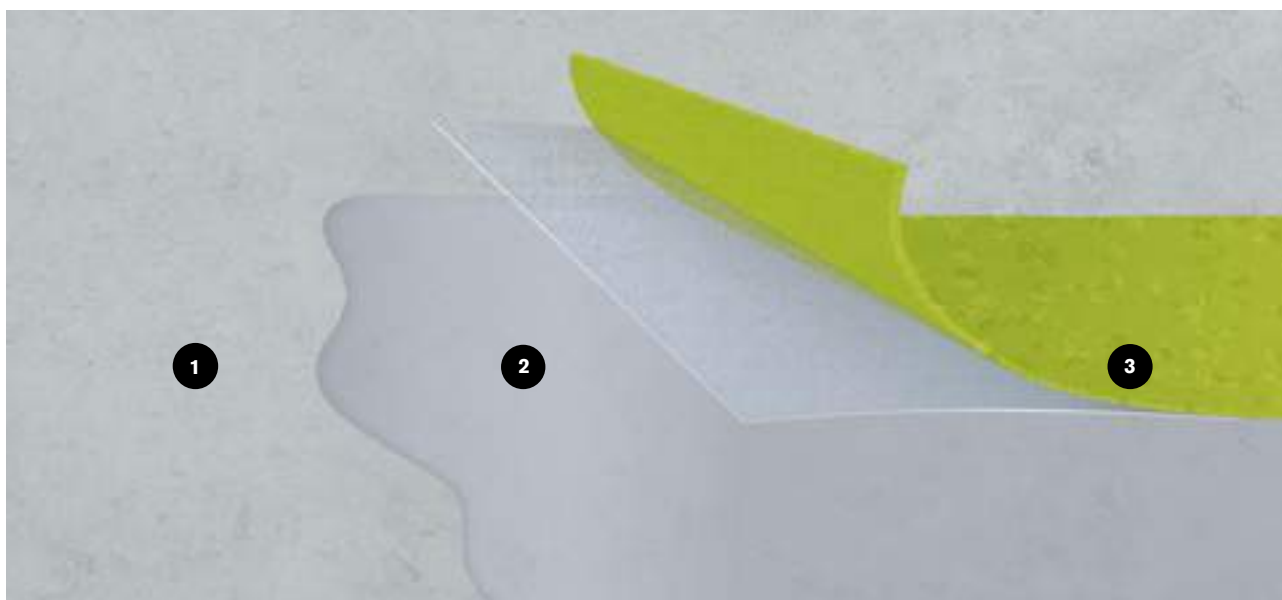


nora® nTx 

The revolutionary quick installation system

nora nTx is a unique technology for the professional installation of nora rubber floor coverings. Ingeniously simple – nora nTx brings its adhesive strength along from the factory. The flooring is cleanly and safely installed in only a few steps and immediately ready for use. And this can be done on the concrete or cement screed subfloors typical in new construction, as well as over other existing floor coverings. Even high residual moisture in the subfloor is not a problem for nora nTx.

nora also offers a range of tools and installation material to ensure clean and safe substrate preparation (see page 85).



1 Subfloor **2** nora® nTx 020 (primer) **3** nora® nTx floor covering with self-adhesive back



nora nTx consists of our noraplan® and norament® standard floor coverings, which are equipped with an adhesive backing. The adhesive is covered with a protective film. The glue – like our floor coverings – is rubber-based and particularly health-friendly. Specially developed installation materials and tools for nora nTx provide functional safety and ensure the highest quality standards. nora nTx was awarded the “Plus X Award” in the “High Quality and Functionality” category.

The advantages at a glance



Reliable installation result

nora® nTx reduces installation problems: no bubbles, no residual indentations, no seams. Everything from a single source: 10-year-warranty.



Immediate usability

Avoid drying and waiting times. Installation is possible during ongoing operations, and the floor can be used immediately after installation.



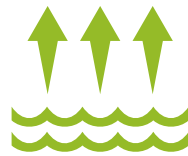
High efficiency

The preparation of the floor and the installation of nora® nTx require only a few work steps – for more space in less time.



For all types of subfloors

nora® nTx is suitable for all common types of subfloors – ideal also for problematic subfloors and underfloor heating.



Use with residual moisture

Application in new builds also possible with increased residual moisture in the subfloor.

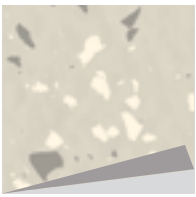


Covering-over-covering installation

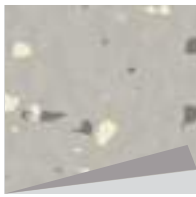
In the case of renovations, installation is possible directly over existing floor coverings in just a few steps.



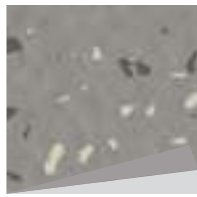
norament® 926 grano nTx · hammerblow surface



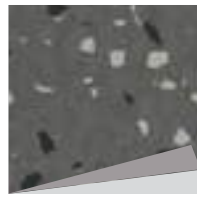
5301



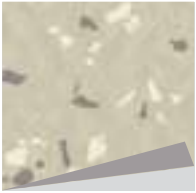
5302



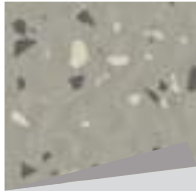
5303



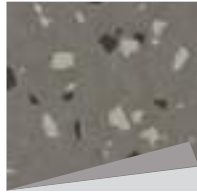
5304



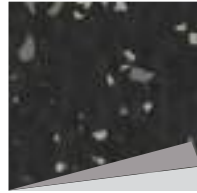
5305



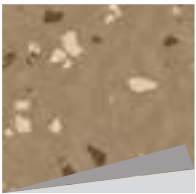
5306



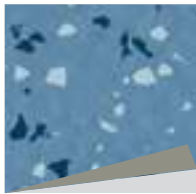
5307



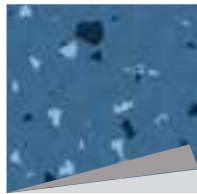
5308



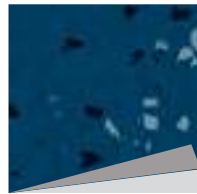
5315



5318



5319



5320



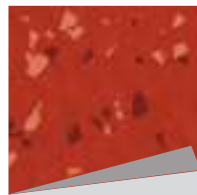
5325



5329



5331



5332

Art. 3111

□ ~1004 mm x 1004 mm



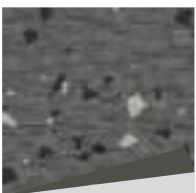
~3.6 mm

nora® profile connection dimension: E + U

Slip resistant R9

**Special colours are available on request.
Please ask for minimum quantities and
delivery times.**

norament® 926 grano nTx · cubic structure



5304

Art. 3127

□ ~1004 mm x 1004 mm



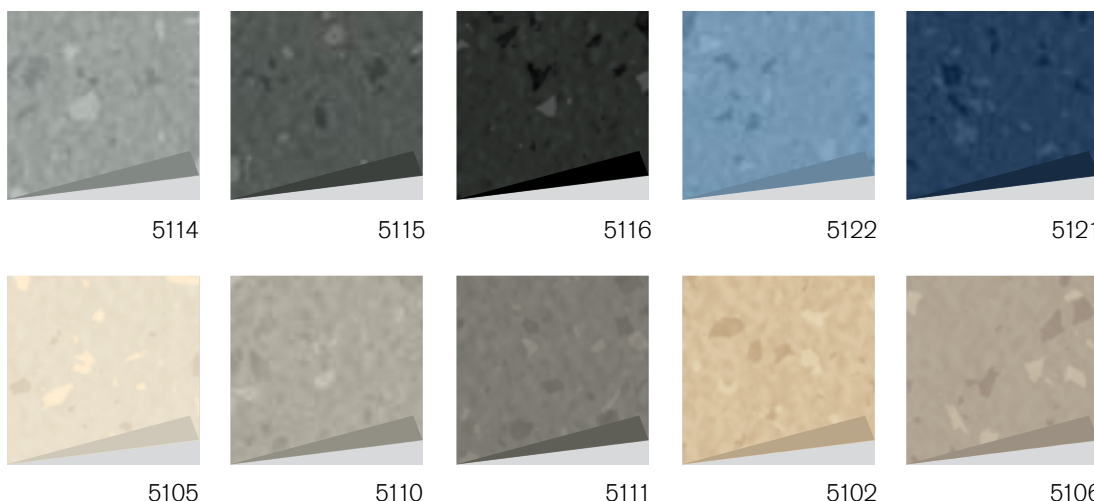
~3.6 mm

nora® profile connection dimension: E + U

Slip resistant R10

**Special colours are available on request.
Please ask for minimum quantities and
delivery times.**

norament® 926 satura nTx · hammerblow surface



5114

5115

5116

5122

5121

5105

5110

5111

5102

5106

Art. 3111

□ ~1004 mm x 1004 mm



~3.6 mm

nora® profile connection dimension: E + U

Slip resistant R9

**Special colours are available on request.
Please ask for minimum quantities and
delivery times.**

norament® 926 arago nTx · relief structure



5178

5177

5175

5172

5171

Art. 3122

□ ~1004 mm x 502 mm



~3.6 mm

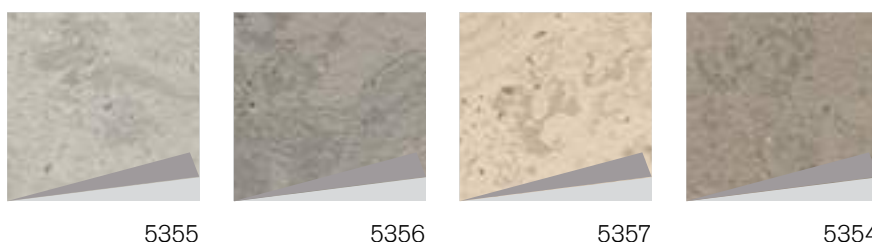
nora® profile connection dimension: E + U

Slip resistant R10

We also supply tiles with chamfered edges on request (Art. 3123)

**Special colours are available on request.
Please ask for minimum quantities and
delivery times.**

norament® 926 castello nTx · two-tone surface



5355

5356

5357

5354

Art. 3177

□ ~1004 mm x 1004 mm



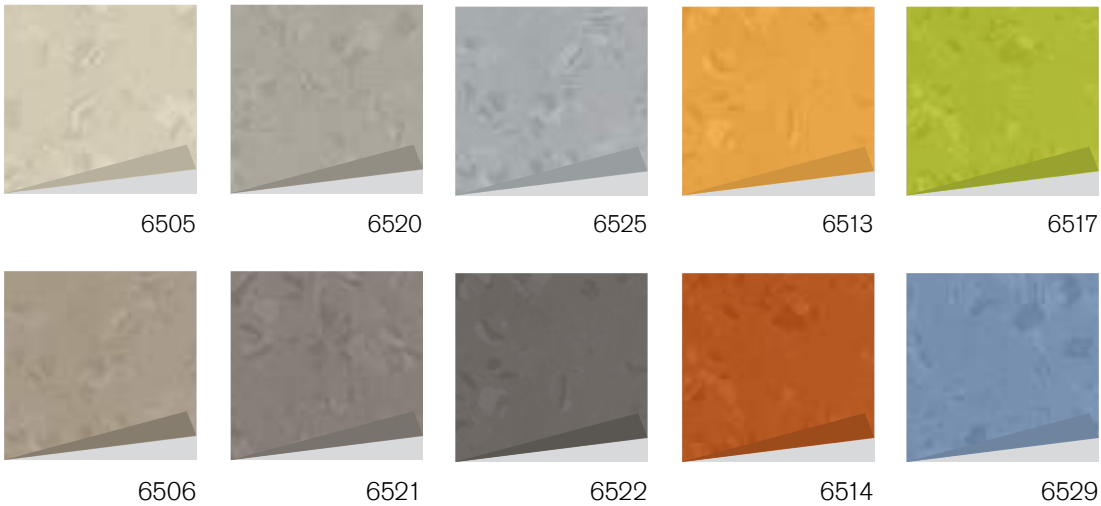
~3.6 mm

nora® profile connection dimension: E + U

Slip resistant R9

**Special colours are available on request.
Please ask for minimum quantities and
delivery times.**

noraplan® sentica nTx · smooth surface



Art. 182C

~1.22 m x 15.0 m

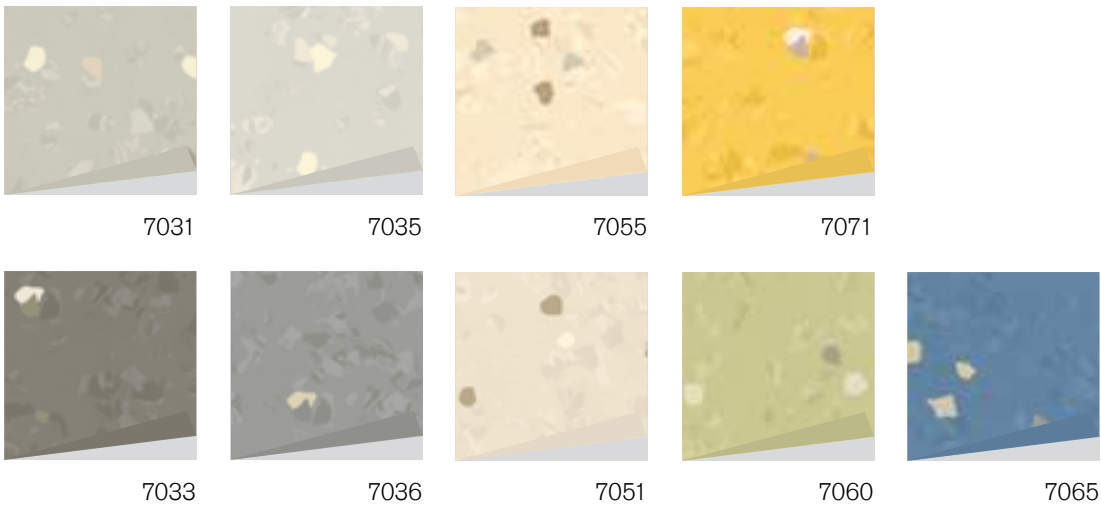
~2.1 mm

nora® profile connection dimension: A + U

Slip resistant R9

Special colours and dimensions (e.g. short rolls) are available on request. Please ask for minimum quantities and delivery times.

noraplan® signa nTx · smooth surface



Art. 181C

~1.22 m x 15.0 m

~2.1 mm

nora® profile connection dimension: A + U

Slip resistant R9

Special colours and dimensions (e.g. short rolls) are available on request. Please ask for minimum quantities and delivery times.

noraplan® signa nTx · reflection-breaking surface



Art. 128F

~1.22 m x 15.0 m

~2.1 mm

nora® profile connection dimension: A + U

Slip resistant R10

Special colours and dimensions (e.g. short rolls) are available on request. Please ask for minimum quantities and delivery times.

7036

nora® nTx installation material

nora® nTx 020 has been developed specifically for nora® nTx floor coverings. The perfect matching between the primer and the nora® nTx floor coverings provides functional reliability and ensures the highest standards of quality. Moreover, nora® nTx 020 can be applied to subfloors with higher residual moisture levels.

nora® nTx 020
1C primer (Bonding agent)

Art. 6684
Primer for improved adhesion
Available as 5 kg or 12 kg container

nora® nTx tools

nora® nTx sanding disc incl. nTx K3
Sanding disc for preparing substrates

Art. 6685
Suitable sanding discs for the machines: Mambo, Columbus, and Orkan. Already fitted with sanding tool nTx K3.
NOTE: Please specify the machine type in your order

nora® nTx K3
Sanding tool (fine)

Art. 6686
Sanding tool for nTx sanding disc

nora® nTx K2
Sanding tool (coarse)

Art. 6687
Sanding tool for nTx sanding disc



Sanding disc



Sanding tools

nora one® — a fully certified flooring system

nora one® provides the best possible solution for semi-wet bonding of rubber floor coverings. The combination of low-emission nora floors with suitable floor installation products and flooring installers specially trained by nora form a certified complete system.

This low-emission complete system is certified in line with Indoor Air Comfort GOLD. This eliminates harmful interactions between the separate elements. The individual components have also been awarded the Emission EC1^{PLUS} certificate.

nora also provides an extended warranty period of eight years on this coordinated complete system.

Your benefits at a glance



A reliable system

- The individual components have been tested as a system and optimally coordinated to function perfectly
- Qualified floor layers ensure high-quality flooring installation
- Avoid downtime, complaints and additional costs



A cooperative partnership

- nora systems is your reliable partner, providing everything you need from one source
- Support through all phases of your project
 - Tender and bid support
 - Creation of installation recommendations
 - Complete and transparent documentation of laying work
 - Advice on cleaning and maintenance



A secure investment

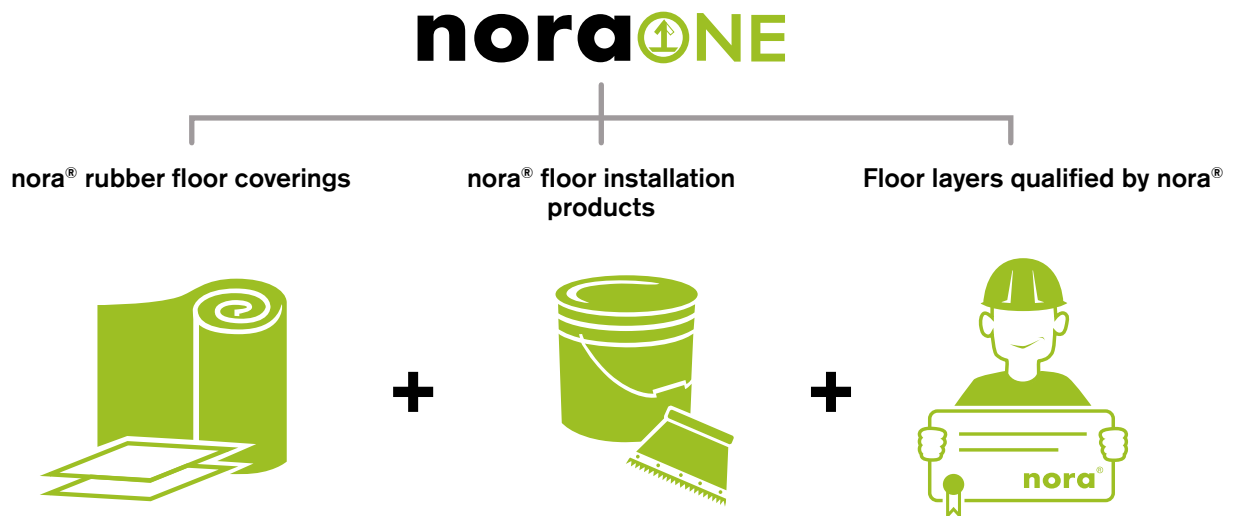
- Extended warranty period of eight years on the entire system
- Improved interior environment for long-term retention of property value



Healthy indoor air

- Low emissions
- No harmful interactions between the individual components
- Awarded Indoor Air Comfort Gold, Greenguard Gold and Emission EC1^{PLUS} certificates

Overview of system components



Certified complete system with extended warranty

Our system has been awarded Indoor Air Comfort Gold and Greenguard Gold certificates and achieved positive test results from Polymer Service GmbH Merseburg. This enables us to grant our customers an extended warranty period of eight years on the nora one® complete system.

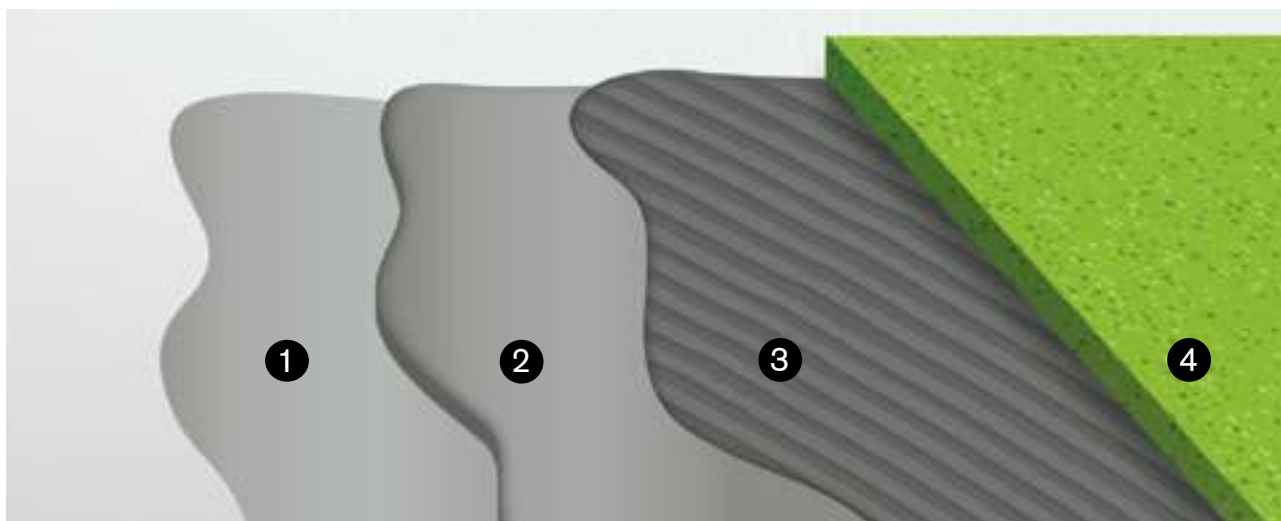


Details of the certified products and further information on eco labels are available at certificates.nora.com or upon request.





A complete system from one source



The nora one® system — **1** Primer, **2** Leveling compound, **3** Adhesive, **4** nora® rubber floor covering

nora one® — available products

We have the perfect floor installation products at hand for almost any subfloor. Choose a product from each of the following categories to create the ideal base. Please contact us if you have any questions.

Primers:

nora® PRP 101	— Special primer for porous subfloor	Art. 6699
nora® PRN 102	— Special primer for non-porous subfloor	Art. 6700
nora® DPM 100	— 2-part epoxy damp proof membrane	Art. 6701

Leveling compounds:

nora® L 1000	— High performance self-leveling compound	Art. 6697
nora® SF 1001	— Internal repair mortar	Art. 6698
nora® fibers	— Reinforcement fibers for nora® L 1000	Art. 6654

Adhesives:

nora® AC 100	— Acrylic adhesive	Art. 6694
nora® ED 120	— Fiber-reinforced conductive acrylic adhesive	Art. 6695
nora® PU 102	— 2-part polyurethane adhesive	Art. 6696

noraONE

nora® accessories

Accessory range made of rubber matched to suit nora® floor coverings for convincing solutions both in visual and functional terms. The materials are impact and shock resistant, do not contain any phthalate plasticizers and retain their functional reliability long term.

nora® skirting and skirting angles

Easy to clean, suitable for areas with stringent hygienic requirements.

1 SA 7002 Skirting outer angle

 22*
SA 7002 A

 22*
SA 7002 D

 8*
SA 7002 E

Suitable for Skirting S 3003

Art. 508

Delivery unit: as pieces

Connection dimensions:


A = 2.1 mm

D = 3.1 mm


E = 3.7 mm

*Further colours on request

2 S 3003 Skirting

 22*
S 3003 A

 22*
S 3003 D

 8*
S 3003 E

Matching with skirting angles SI 7001 and SA 7002.

Art. 726

Delivery unit: in rolls of 10 r.m.

Connection dimensions:

A = 2.1 mm

D = 3.1 mm

E = 3.7 mm

*Further colours on request

3 SI 7001 Skirting inner angle

 22*
SI 7001 A

 22*
SI 7001 D

 8*
SI 7001 E

Suitable for Skirting S 3003

Art. 507

Delivery unit: as pieces

Connection dimensions:

A = 2.1 mm

D = 3.1 mm

E = 3.7 mm

*Further colours on request

nora® skirting

4 S 1024 U Height 100 mm

 41*
S 1024 U

For areas with stringent requirements in terms of appearance. The permanently resilient sealing lip of S 1024 U reliably accommodates pastille heights of up to 1 mm. Also suitable as wall stringer with raised-access floors.

Art. 713

Delivery unit: in rolls of 10 r.m.

*Further colours on request

5 S 1023 U Height 60 mm

 102*
S 1023 U

For areas with stringent requirements in terms of appearance. The permanently resilient sealing lip of S 1023 U reliably accommodates pastille heights of up to 1 mm. Also suitable as wall stringer with raised-access floors.

Art. 712

Delivery unit: in rolls of 10 r.m.

*Further colours on request

6 S 1008 U Height 50 mm

 32*
S 1008 U

Multi-purpose skirting
Adjoining skirting for nora® stair angles "TW"

Art. 705

Delivery unit: in rolls of 10 r.m.

*Further colours on request

nora® cushioned-edge profile

H 9010
For optimum transition between the nora® floor coverings and the wall.

Delivery unit: 5 rolls of 10 r.m.
Art. 7731



Skirting, S 1023 U

0007	1362	2457	4877	5317	6505	6515	6530	6711	7044
0319	1385	2635	5109	5318	6506	6516	6532	6712	7049
0702	1581	2666	5114	5321	6507	6517	6607	6713	7051
0716	1862	2925	5115	5325	6508	6518	6608	6714	7052
0749	2098	2944	5121	5329	6509	6519	6609	6721	7065
0882	2099	2946	5122	6173	6510	6522	6611	6722	7066
0884	2144	2949	5128	6178	6511	6523	6616	6723	7067
1146	2380	2950	5301	6500	6512	6525	6708	6725	7072
1150	2382	2962	5304	6501	6513	6528	6709	6728	7076
1162	2446	4618	5306	6504	6514	6529	6710	7033	7102
1279	2454								

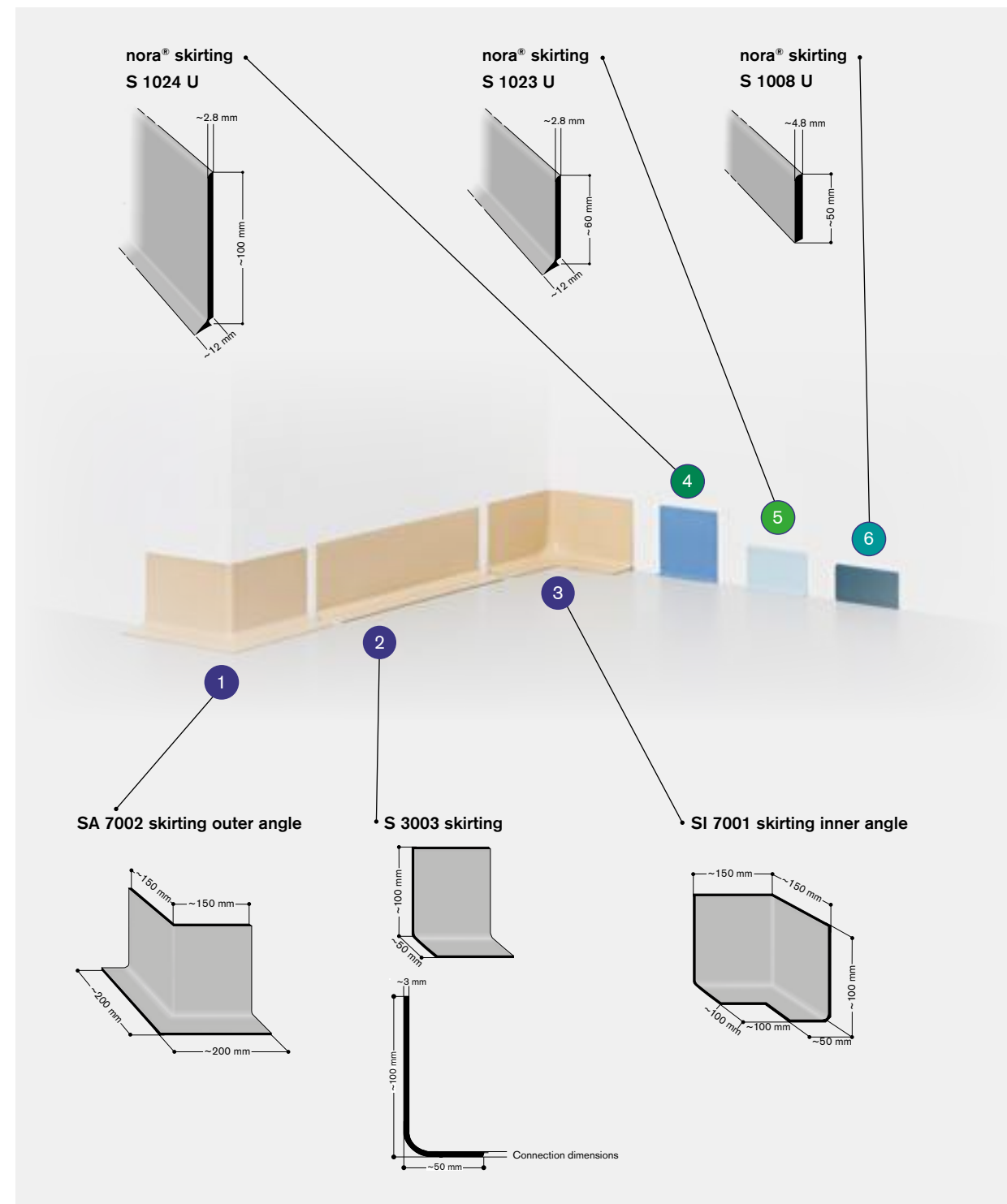
Skirting, S 1024 U

0007	0882	1279	2382	2946	5306	6506	6513	6523	7049
0319	0884	1385	2666	4877	5318	6507	6516	6525	7065
0702	1146	1862	2925	5301	6173	6508	6517	7033	7066
0716	1150	2099	2944	5304	6503	6509	6522	7047	7067
0749									

Skirting, S 1008 U

0007	0733	2786	5108	5115	5127	5303	5314	5318	5343
0319	0749	5103	5110	5116	5301	5304	5315	5325	6507
0702	0882	5107	5114	5121	5302	5313	5317	5329	6522
0716	0884								

Special colours are available on request.
Please ask for minimum quantities and delivery times.



Skirting, S 3003 A/S 3003 D

Skirting inner angle, SA 7002 A/SI 7001 A/SA 7002 D/SI 7001 D

0882	2382	6504	6509	6517	6530	7033	7044	7052	7065	7067
2099	2944	6508	6513	6529	7031	7035	7051	7056	7066	7076

Skirting, S 3003 E

Skirting inner angle, SA 7002 E/SI 7001 E

5301	5304	5306	5317	5318	5321	5325	5329
------	------	------	------	------	------	------	------

Joint sealing compound

0007	2647	5111	5307	5361	6500	6528	7001	7038	7066	7116
0131	2666	5112	5308	5362	6501	6529	7002	7039	7067	7117
0319	2681	5113	5310	5363	6502	6530	7003	7040	7068	7118
0597	2781	5114	5311	5364	6503	6531	7004	7041	7069	7119
0702	2786	5115	5313	5365	6504	6532	7005	7042	7070	7120
0716	2787	5116	5314	5366	6505	6533	7006	7043	7071	7201
0733	2848	5117	5315	5367	6506	6534	7007	7044	7072	7202
0749	2897	5118	5317	5368	6507	6535	7008	7045	7073	7203
0882	2931	5119	5318	5508	6508	6536	7009	7046	7074	7204
0884	2932	5120	5319	5509	6509	6537	7010	7047	7075	7205
1146	2940	5121	5321	5512	6510	6601	7011	7048	7076	7206
1150	2944	5122	5324	5513	6511	6603	7012	7049	7077	7207
1253	2946	5123	5325	6007	6512	6613	7013	7050	7078	7208
1254	2951	5124	5329	6009	6513	6620	7014	7051	7101	7209
1279	2962	5125	5332	6014	6514	6624	7015	7052	7102	7210
1385	2981	5126	5335	6015	6515	6703	7016	7053	7103	7211
1578	4877	5127	5336	6016	6516	6708	7017	7054	7104	7212
1581	4881	5128	5337	6019	6517	6716	7018	7055	7105	7213
1582	5101	5129	5342	6020	6518	6720	7019	7056	7106	7214
1585	5102	5130	5343	6056	6519	6730	7020	7057	7107	7216
2070	5103	5131	5351	6102	6520	6901	7021	7058	7108	7217
2142	5104	5132	5352	6114	6521	6902	7031	7059	7109	7218
2226	5105	5301	5353	6129	6522	6903	7032	7060	7110	7219
2306	5106	5302	5354	6172	6523	6905	7033	7061	7111	7220
2382	5107	5303	5355	6178	6524	6912	7034	7062	7112	7221
2452	5108	5304	5356	6179	6525	6916	7035	7063	7113	7222
2454	5109	5305	5357	6325	6526	6918	7036	7064	7114	7223
2457	5110	5306	5358	6449	6527	6923	7037	7065	7115	7224

Special colours are available on request.
Please ask for minimum quantities and delivery times.

nora® special range

The special range offers profiles with different cross-sections for further applications.

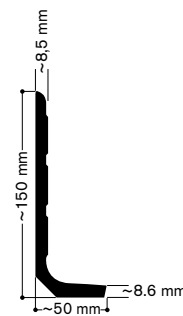
Minimum order quantities on request.

The profiles shown here are examples only. Further individual designs are available on request.

nora® skirting s 3014 N

Special skirting for norament® 992 and norament® 992 grano

Delivery unit: 2 m



nora® skirting s 1013 U

Skirting 10 cm high, also suitable for the use on other floor coverings

Delivery unit: in rolls of 10 r.m.



nora® dry adhesives

nora dryfix™ 750

Dry adhesive supplied in rolls

For the permanent fixing of nora® floor coverings. Suitable for new builds and renovations.

Advantages: 5 times as quick, can be walked on immediately, odourless, economic, low-emission and reliable.

Art. 6556

Delivery unit: 1 roll of 30 r.m. in one carton

nora dryfix™ ed

Conductive dry adhesive supplied in rolls

For the permanent fixing of electrostatically dissipative or conductive nora® floor coverings. Suitable for new builds, renovations and on top of existing floor coverings.

Advantages: 5 times as quick, can be walked on immediately, odourless, economic, low-emission and reliable.

Art. 6706

Delivery unit: 1 roll of 30 r.m. in one carton

nora® stepfix 240

Dry adhesive supplied in rolls

For quick installation of norament® stairtreads, stairwell installations with nora® stair nosing T 5044 and nora® stair margin.

Art. 907

Delivery unit: 1 roll of 50 r.m. in one carton

nora® profix · Dry adhesive tapes

nora® profix 50

For quick installation of skirting S 1023 U.

Art. 992

Delivery unit: 4 rolls of 50 r.m. in one carton

nora® profix 90

For quick installation of skirtings S 1024 U, S 3003 as well as for pedestal formation through wall nosings (cushioned-edge profile).

Art. 993

Delivery unit: 2 rolls of 50 r.m. in one carton

nora® hot welding rod

For noraplan® – available in matching colours for all floor coverings.

In general, nora® floor coverings do not need to be sealed. The only exceptions are noraplan® acoustic floor coverings. For our other floorings, we recommend sealing the joints when the flooring has been installed on a moisture-sensitive subfloor, in rooms with continual and intensive wet cleaning, in areas with stringent hygiene requirements, or for special requirements (e.g. in laboratories).

In operating theatres or other small surfaces where the joints of the skirtings are sealed with nora® joint sealing compound, the compound can also be used for these surfaces to harmonise the installation process.

Art. 946

Round, Ø 4 mm, rolls of 100 r.m.

nora® joint sealing compound

For all nora® floor coverings

It is not generally necessary to seal nora® floor coverings. The exceptions are electrostatically dissipative noraplan® floorings. However, we do advise sealing the joints if the subfloor is moisture-sensitive, in rooms subject to intensive wet cleaning, or in areas with special hygiene requirements. In these cases, we recommend sealing all nora® floorings.

Art. 928

300 ml cartridge

1 disposable cartridge, sufficient for 20–25 r.m.

Please note: Joint cutter (art. no. 116950) and nora® liquid wax (art. no. 109914) may be ordered from our company.



Photos: © Elmar Witt

nora® pads

nora® pads are suitable for daily cleaning and intensive cleaning on extremely soiled norament® and noraplan® rubber floor coverings. Cleaning and polishing are mechanical processes – just with water and absolutely no chemicals at all. nora® pads can be used with most standard types of machine and are available in different sizes.



Art. 6688

nora® pad 0 – 10"		Ø 254 mm	delivery unit: 4 pieces in one carton
nora® pad 0 – 13"	nora® Pad 0	Ø 330 mm	delivery unit: 4 pieces in one carton
nora® pad 0 – 14"	for the cleaning with machines for structured noraplan® floor coverings and noraplan® uni, noraplan® unita, noraplan® ultra grip as well as for norament® floor coverings with two-tone surface:	Ø 356 mm	delivery unit: 4 pieces in one carton
nora® pad 0 – 16"		Ø 406 mm	delivery unit: 4 pieces in one carton
nora® pad 0 – 17"		Ø 431 mm	delivery unit: 1 or 4 pieces in one carton

nora® pad 0 – 20"	for polishing cleaned floor coverings with a high speed machine for structured noraplan® floor coverings and noraplan® uni, noraplan® unita, noraplan® ultra grip as well as for norament® floor coverings with two-tone surface:	Ø 508 mm	delivery unit: 1 or 4 pieces in one carton
--------------------------	---	----------	--

Art. 6627

nora® pad 1 – 10"		Ø 254 mm	delivery unit: 4 pieces in one carton
nora® pad 1 – 13"	nora® Pad 1	Ø 330 mm	delivery unit: 4 pieces in one carton
nora® pad 1 – 14"	for daily maintenance cleaning with machines for smooth noraplan® floor coverings as well as for norament® floor coverings with hammerblow or cubic structure:	Ø 356 mm	delivery unit: 4 pieces in one carton
nora® pad 1 – 16"		Ø 406 mm	delivery unit: 4 pieces in one carton
nora® pad 1 – 17"		Ø 431 mm	delivery unit: 1 or 4 pieces in one carton

nora® pad 1 – 20"	for polishing cleaned floor coverings with a high speed machine for smooth noraplan® floor coverings and norament® floor coverings with hammerblow or cubic structure:	Ø 508 mm	delivery unit: 1 or 4 pieces in one carton
--------------------------	--	----------	--

Art. 6628

nora® pad 2 – 17"	nora® Pad 2		
	for intermediate and intensive cleaning with a single disk machine for smooth noraplan® floor coverings and norament® floor coverings with hammerblow or cubic structure:	Ø 431 mm	delivery unit: 1 or 4 pieces in one carton

Art. 6629

nora® pad 3 – 17"	nora® Pad 3		
	for intensive cleaning of heavily soiled and scratched floor coverings with a single disk machine for smooth noraplan® floor coverings and norament® floor coverings with hammerblow or cubic structure:	Ø 431 mm	delivery unit: 1 piece in one carton



nora 4you

nora 4you provides solutions for your individual flooring needs. Flooring gives your rooms structure, personality and life. With nora 4you, you can design your rooms exactly as you want them. We offer customised solutions that make your rooms special and distinctive in a way that is important to you. Anything is possible.

Quality and functionality are crucial criteria when selecting floor coverings. With nora 4you, we go one step further and put an additional focus on design and individuality. This allows you to creatively design, structure or accentuate your surfaces with colours, patterns and inlays according to your specific requirements and ideas.

Inlays

Create inlays based on our templates or design compositions of your own imagination. At our inlay centre we can process your images, drawings or image files to create your own design. Our state-of-the-art ultrasound cutting machine cuts almost any motif into 100% matching pieces that can be laid without sealing the joints. To guarantee easy installation, we supply inlays up to a size of 1.60 x 1.22 metres, fully assembled and ready for laying. For large-sized inlays, we provide the floor layer with detailed laying plans.

Room Inlays

Room inlays are design elements. Depending on the colour combination, design language and combination of materials, they change and shape the room. Whether used as part of a comprehensive design concept or as a decorative eye-catcher, inlays make a statement that can't be overlooked. They help give spaces a distinctive identity.



Erika-Fuchs-Haus, Schwarzenbach an der Saale, Germany



© Werner Huthmacher

Routing systems

With nora 4you, you can adapt your routing system to your individual spatial circumstances. For example, colour-coded stripes or signs in the floor help people to orientate themselves as they move through different sections or parts of the building.

In addition, nora offers a variety of inlay options for flooring or skirting boards to mark escape routes with integrated light strips or other lighting elements.



© nora

Choose from our standard symbols or design your own

nora offers you a wide range of standardised templates, which we can customise according to your requirements. In addition to our standard symbols, we will be happy to design and create individual symbols or logos to suit your specific requirements.



© nora



Notting Hill Preparatory School, London, UK
© Hanson Architects | Davide Saibene

Planks and Tiles

Our plank and tile concept gives you almost limitless freedom to design your rooms the way you want. You can use any combination of plank or tile shapes and colours to influence the overall design of the room. The laying pattern also has a decisive influence on the sense of space. Planks enable you to create a distinctive and individual spatial effect in variants that are precisely tailored to your needs. Even with tiles, you can realise different laying patterns or set unusual accents.

Our plank formats are available with most noraplan® designs. We deliver planks in your choice of colour and in five standard sizes optionally in 2 mm or 3 mm. In addition, with monochrome installations of planks or tiles, the edges can be chamfered to accentuate the plank or tile character and create an elegant joint pattern. Talk to us about your ideas and we will be happy to support you with individual planning.

Different formats for endless possibilities and individual room design.

noraplan®



~ 610 mm x 305 mm



~ 1220 mm x 405 mm



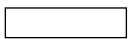
~ 610 mm x 610 mm



~ 610 mm x 205 mm

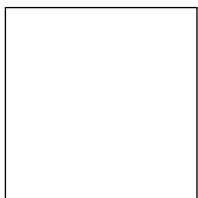


~ 1220 mm x 202.5 mm



~ 610 mm x 152.5 mm

norament®



~ 1004 mm x 1004 mm

norament® 926 arago



~ 1004 mm x 502 mm

Further plank and tile sizes are available on request. Please ask for minimum quantities.



Special colours

With over 300 colours and shades, even our standard product programme provides outstanding choice. However, if you are looking for a different colour, we will be happy to develop an individual colour for your project. We can customise almost any colour using samples or colour codes (NCS, RAL, Pantone) and implement your wishes in the flooring. For example, you can design your entire building in one shade without compromising the functional properties of your flooring.

You can choose from different:

- base colours
- granules
- surface structures

Please ask for minimum quantities and delivery times.



	Test method	Requirements	Average test results from running production						
			926	926 arago 926 castello 926 grano 926 pado 926 satura	825	926 kivo	992 992 grano	975 LL	
CE conformity	EN 14041		← Manufacturer: nora systems GmbH, D-69469 Weinheim →						
DoP-No.	EN 14041		0021		0004	0021	0023	0024	
Thermal conductivity	EN 10456	$\lambda = 0.17 \text{ W/(mK)}$	← Fulfilled →						
Dynamic coefficient of friction	EN 13893	DS	← Fulfilled →						
Reaction to fire	EN 13501-1	Not bonded	C _f -s1		C _f -s1	C _f -s1	C _f -s2	B _f -s1	
Reaction to fire	EN 13501-1	Bonded on mineral subfloor	B _f -s1		B _f -s1	B _f -s1	C _f -s1	-	
Properties acc. to EN 1817/EN 12199									
Thickness	EN ISO 24346	Mean value ± 0.20 mm according to EN 12199	4 mm		3.2 mm		9 mm (Art. 1956)		
		Mean value ± 0.15 mm according to EN 1817		3.5 mm		2.7 mm	9 mm (Art. 1955)	3.5 mm	
Dimensional stability	EN ISO 23999	± 0.4 %	← ± 0.2 % →						± 0.1 %
Tear strength	ISO 34-1, method B, procedure A	Mean value ≥ 20 kN/m	40 kN/m	40 kN/m	35 kN/m	35 kN/m	45 kN/m	40 kN/m	
Cigarette-burn resistance	EN 1399	Procedure A (stubbled out) ≥ level 4 Procedure B (burning) ≥ level 3	← Fulfilled →						
Flexibility	EN ISO 24344, procedure A	Mandrel diameter 20 mm, no fissuring	← Fulfilled →						
Hardness	ISO 48-4	≥ 70 Shore A (EN 12199) ≥ 75 Shore A (EN 1817)	82 Shore A	82 Shore A	87 Shore A	82 Shore A	70 Shore A	85 Shore A	
Residual indentation	EN ISO 24343	Mean value ≤ 0.25 mm at thickness ≥ 3.0 mm Mean value ≤ 0.20 mm at thickness < 3.0 mm	0.12 mm	0.12 mm	0.12 mm	0.12 mm	0.25 mm	0.07 mm	
Abrasion resistance at 5 N load	ISO 4649, procedure A	≤ 250 mm ³	115 mm ³	115 mm ³	130 mm ³	115 mm ³	90 mm ³	120 mm ³	
Colour fastness to artificial light	ISO 105-B02, procedure 3, test conditions 6.1 a)	At least level 6 on the blue scale; ≥ level 3 on the grey scale	← Grey scale ≥ level 3 acc. to ISO 105-A02 →						
Classification	EN ISO 10874	Commercial/Industrial	34/43	34/43	32/41	34/43	34/43	34/43	
Additional technical properties									
Toxicity of fire gases	DIN 53436		Carbonisation gases are non-toxic		-	Carbonisation gases are non-toxic	-	-	
Anti-slip properties	DIN 51130	According to DGUV 108-003	R 9	R 9 926 grano/Art. 1880 = R 9 926 grano/Art. 1870 = R 10 arago = R 10	R 9	R 9	R 9	R 9 975 LL serra = R 10	
	DIN 51097		A	926 grano/Art. 1870 = A, B arago = A, B	-	-	-	-	
Improvement in footfall sound absorption	ISO 10140-3		12 dB	10 dB	9 dB	8 dB	15 dB	8 dB	
Effect of chemicals	EN ISO 26987		← Resistant depending on concentration and time of exposure* →						
Electrical insulation properties	EN 1081 R1		← > 10 ⁹ Ohm →						
Electrical propensity when walked upon	EN 1815		← Antistatic, charging in case of rubber soles < 2 kV →						
Effect of a castor chair	EN ISO 4918		← Suitable if castor wheels, type W, according to EN 12529 are used →						
Underfloor heating	EN 1264-2		← Suitable, max. 35° C →						

* In case of increased impact of oils, greases, acids, alkalis and other aggressive chemicals please contact us.

EN 1817: Specification for homogeneous and heterogeneous smooth elastomer floor coverings
EN 12199: Specification for homogeneous and heterogeneous profiled elastomer floor coverings

Colour variations due to different production batches as well as technical alterations to improve the product have to be accepted.

noraplan®

	Test method	Requirements	Average test results from running production					
			uni 2.0 mm	eco 2.0 mm linee 2.0 mm lona 2.0 mm senitica 2.0 mm signa 2.0 mm stone 2.0 mm valua 2.0 mm	unita 2.0 mm	ultra grip 2.0 mm	senitica 3.0 mm signa 3.0 mm valua 3.0 mm	senitica acoustic signa acoustic stone acoustic
CE conformity	EN 14041		← Manufacturer: nora systems GmbH, D-69469 Weinheim →					
DoP-No.	EN 14041		0018	0016	0010	0016	0017	
Thermal conductivity	EN 10456	$\lambda = 0.17 \text{ W/(m·K)}$	← Fulfilled →					
Dynamic coefficient of friction	EN 13893	DS	← Fulfilled →					
Reaction to fire	EN 13501-1	Not bonded	B ₁ -s1	B ₁ -s1, bonded	C ₁ -s1	B ₁ -s1, bonded	C ₁ -s1	
Reaction to fire	EN 13501-1	Bonded on mineral subfloor	B ₁ -s1	B ₁ -s1	C ₁ -s1	B ₁ -s1	B ₁ -s1	
Properties acc. to EN 1817/EN 1816								
Thickness	EN ISO 24346	Mean value without foam backing ± 0.15 mm	2.0 mm	2.0 mm	2.0 mm	3.0 mm	-	
		Mean value with foam backing ± 0.20 mm	-	-	-	-	4.0 mm	
Dimensional stability	EN ISO 23999	± 0.4 %	← ± 0.3 % →					
Cigarette-burn resistance	EN 1399	Procedure A (stubbed out) level ≥ 4 Procedure B (burning) level ≥ 3	← Fulfilled →					
Flexibility	EN ISO 24344, procedure A	Mandrel diameter 20 mm, no fissuring	← Fulfilled →		Not fulfilled	Fulfilled	-	Fulfilled
Hardness	ISO 48-4	≥ 75 Shore A	94 Shore A	92 Shore A	90 Shore A	92 Shore A	85 Shore A	
Residual indentation	EN ISO 24343	Mean value ≤ 0.15 mm at thickness < 2.5 mm	0.03 mm	0.03 mm	0.05 mm	-	-	
		Mean value ≤ 0.20 mm at thickness ≥ 2.5 mm	-	-	-	0.03 mm	-	
		acoustic: Mean value ≤ 0.25 mm	-	-	-	-	0.25 mm	
Abrasion resistance at 5 N load	ISO 4649, procedure A	≤ 250 mm ³	130 mm ³	150 mm ³	90 mm ³	150 mm ³	130 mm ³	
Colour fastness to artificial light	ISO 105-B02, procedure 3, test conditions 6.1 a)	At least level 6 on the blue scale; ≥ level 3 on the grey scale	← Grey scale ≥ level 3 acc. to ISO 105-A02 →					
Classification	EN ISO 10874	Commercial/Industrial	34/42	34/42	34/42	34/43	33/-	
Additional technical properties								
Toxicity of fire gases	DIN 53436		← Carbonisation gases are non-toxic →					
Anti-slip properties	DIN 51130	According to DGUV 108-003	R 9	stone Art. 149/249 + signa Art. 1690/2690: R 10 Others: R 9	R 11	R 9	stone acoustic: R 10 Others: R 9	
	DIN 51097		-	stone Art. 149/249 + signa Art. 1690/2690: A; B	A; B; C	-	-	
	BS 7976 TRRL Pendulum		-	-	36+ Wet & dry	-	-	
	SATRA TM 144		-	-	Wet: > 0.6 Dry: > 0.45	-	-	
Improvement in footfall sound absorption	ISO 10140-3		6 dB	6 dB	7 dB	8 dB	20 dB	
Effect of chemicals	EN ISO 26987		← Resistant depending on concentration and time of exposure* →					
Electrical insulation properties	EN 1081 R1		> 10 ⁹ Ohm	> 10 ¹⁰ Ohm	> 10 ⁹ Ohm	> 10 ¹⁰ Ohm	> 10 ⁹ Ohm	
Electrical propensity when walked upon	EN 1815		← Antistatic, charging in case of rubber soles < 2 kV →					
Effect of a castor chair	EN ISO 4918		← Suitable if castor wheels, type W, according to EN 12529 are used →					
Underfloor heating	EN 1264-2		← Suitable, max. 35° C →					

* In case of increased impact of oils, greases, acids, alkalis and other aggressive chemicals please contact us.

EN 1817: Specification for homogeneous and heterogeneous smooth elastomer floor coverings
EN 1816: Specification for homogeneous and heterogeneous smooth elastomer floor coverings with foam backing

Colour variations due to different production batches as well as technical alterations to improve the product have to be accepted.

nora[®] nTx

	Test method	Requirements	Average test results from running production	
			noraplan [®]	norament [®]
			eco nTx** linee nTx** lona nTx** septica nTx signa nTx stone nTx** valua nTx**	926 arago nTx 926 castello nTx 926 grano nTx 926 pado nTx** 926 satura nTx
CE conformity	EN 14041		← Manufacturer: nora systems GmbH, D-69469 Weinheim →	
DoP-No.	EN 14041		0027	0031
Thermal conductivity	EN 10456	$\lambda = 0.17 \text{ W/(m·K)}$	← Fulfilled →	
Dynamic coefficient of friction	EN 13893	DS	← Fulfilled →	
Reaction to fire	EN 13501-1		C _s -s1, bonded	C _s -s1, bonded
Properties acc. to EN 1817				
Thickness	EN ISO 24346	Mean value ± 0.15 mm according to EN 1817	2.1 mm or 3.1 mm**	3.6 mm
Dimensional stability	EN ISO 23999	± 0.4 %	± 0.3 %	± 0.2 %
Cigarette-burn resistance	EN 1399	Procedure A (stubbled out) ≥ level 4 Procedure B (burning) ≥ level 3	← Fulfilled →	
Flexibility	EN ISO 24344, procedure A	Mandrel diameter 20 mm, no fissuring	← Fulfilled →	
Hardness	ISO 48-4	≥ 75 Shore A	92 Shore A	82 Shore A
Residual indentation	EN ISO 24343	noraplan [®] nTx: Mean value ≤ 0.15 mm at thickness < 2.5 mm Mean value ≤ 0.20 mm at thickness ≥ 2.5 mm norament [®] nTx: Mean value ≤ 0.25 mm at thickness ≥ 3.0 mm Mean value ≤ 0.20 mm at thickness < 3.0 mm	0.05 mm	0.15 mm
Abrasion resistance at 5 N load	ISO 4649, procedure A	≤ 250 mm ³	150 mm ³	115 mm ³
Colour fastness to artificial light	ISO 105-B02, procedure 3, test conditions 6.1 a)	At least 6 on the blue scale, ≥ 3 on the grey scale	← Grey scale ≥ 3 acc. to ISO 105-A02 →	
Classification	EN ISO 10874	Commercial/Industrial	2.1 mm: 34/42 3.1 mm: 34/43	34/43
Additional technical properties				
Weight	EN ISO 23997		2.1 mm: ~ 3.36 kg/m ² 3.1 mm: ~ 5.08 kg/m ²	~ 5.40 kg/m ²
Tear strength	ISO 34-1, method B, procedure A		n. a.	35 kN/m
Slip resistance	DIN 51130	According to DGUV 108-003	R 9* R 10* (reflection-breaking surface)	R 9* R 10* (arago nTx, grano nTx with cubic structure)
Improvement in footfall sound absorption	ISO 10140-3		2.1 mm: 4 dB 3.1 mm: 5 dB	8 dB
Effect of chemicals	EN ISO 26987	Depending on concentration and time of exposure	← Resistant ^(A) →	
Electrostatic behaviour when walked upon	EN 1815		← Antistatic, charging in case of rubber soles < 2 kV →	
Effect of a castor chair	EN ISO 4918		← Suitable if castor wheels, type W, according to EN 12529 are used →	
Fire behaviour/smoke behaviour				
Fulfills the requirements				
Fire behaviour	EN 13501-1		C _s -s1, bonded	C _s -s1, bonded
	EN 45545	Hazard Level	HL1*	
Fire behaviour	ASTM E-648 / ISO 9239-1		Class 1 (≥ 0.50 W/cm ²)*	
Smoke density	ASTM E-662	Federal Railroad Administration	After 1.5 minutes < 100, after 4 minutes < 200*	
Toxicity of fire gases	DIN 53436		Carbonisation gases are non-toxic	Carbonisation gases are non-toxic
Adhesive characteristics				
Description			← Pressure-sensitive hot melt adhesive →	
Softening range	Ring & Ball		← approx. 122 - 134 °C →	
VOC			← 0 % →	

* Tested and certificated by an independent testing institute.
 ** Minimum quantities required.
 A) In case of increased impact of oils, greases, acids, alkalis and other aggressive chemicals please contact us.

EN 1817: Specification for homogeneous and heterogeneous smooth elastomer floor coverings
 Colour variations due to different production batches as well as technical alterations to improve the product have to be accepted.

nora[®] ESD floor coverings

	Test method	Requirements	Average test results from running production				
			norament*		noraplan*		
			928 grano ed	927 grano ec	senitica ed 2.0 mm signa ed 2.0 mm stone ed 2.0 mm	senitica ed 3.0 mm signa ed 3.0 mm	astro ec
CE conformity	EN 14041		← Manufacturer: nora systems GmbH, D-69469 Weinheim →				
DoP-No.	EN 14041		0005	0022	0001	0001	0036
Thermal conductivity	EN 10456	$\lambda = 0.17 \text{ W/(mK)}$	← Fulfilled →				
Dynamic coefficient of friction	EN 13893	DS	← Fulfilled →				
Electrical behaviour	EN 1081	$ed \leq 10^9 \text{ Ohm}$	Fulfilled		← Fulfilled →		
		$ec \leq 10^9 \text{ Ohm}$		Fulfilled			Fulfilled
Reaction to fire	EN 13501-1	Not bonded	C _r -s1, bonded	C _r -s2	← C _r -s1 →		
Reaction to fire	EN 13501-1	Bonded on mineral subfloor	C _r -s1	C _r -s1	B _r -s1		C _r -s1

Properties acc. to EN 1817

Thickness	EN ISO 24346	Mean value ± 0.15 mm according to EN 1817	3.5 mm	3.5 mm	2.0 mm	3.0 mm	2.0 mm
Dimensional stability	EN ISO 23999	± 0.4 %	← ± 0.2% →		← ± 0.3% →		
Tear strength	ISO 34-1, method B, procedure A	Mean value ≥ 20 kN/m	45 kN/m	35 kN/m	-		
Cigarette-burn resistance	EN 1399	Procedure A (stubbed out) ≥ level 4 Procedure B (burning) ≥ level 3	← Fulfilled →				
Flexibility	EN ISO 24344, procedure A	Mandrel diameter 20 mm, no fissuring	← Fulfilled →			-	Fulfilled
Hardness	ISO 48-4	≥ 75 Shore A (EN 1817)	84 Shore A	90 Shore A	← 95 Shore A →		
Residual indentation	EN ISO 24343	Mean value ≤ 0.15 mm at thickness < 2.5 mm Mean value ≤ 0.20 mm at thickness ≥ 2.5 mm	-		0.03 mm		
		Mean value ≤ 0.25 mm at thickness ≥ 3.0 mm Mean value ≤ 0.20 mm at thickness < 3.0 mm	0.05 mm		-		
Abrasion resistance at 5 N load	ISO 4649, procedure A	≤ 250 mm ³	90 mm ³	90 mm ³	130 mm ³		150 mm ³
Colour fastness to artificial light	ISO 105-B02, procedure 3, test conditions 6.1 a)	At least level 6 on the blue scale; ≥ level 3 on the grey scale	← Grey scale ≥ level 3 acc. to ISO 105-A02 →				
Classification	EN ISO 10874	Commercial/Industrial	34/43		34/42	34/43	34/42

Additional technical properties

Toxicity of fire gases	DIN 53436		Carbonisation gases are non-toxic	-	Carbonisation gases are non-toxic		
Anti-slip properties	DIN 51130	According to DGUV 108-003	R 9		stone ed: R 10 Others: R 9		R 9
Improvement in footfall sound absorption	ISO 10140-3		10 dB	10 dB	6 dB	8 dB	6 dB
Effect of chemicals	EN ISO 26987		← Resistant depending on concentration and time of exposure* →				
Effect of a castor chair	EN ISO 4918		← Suitable if castor wheels, type W, according to EN 12529 are used →				
Underfloor heating	EN 1264-2		← Suitable, max. 35° C →				

Electrical behaviour**

Resistance to EPA ground	ESD STM 7.1/ IEC 61340-4-1	Measuring the installed floor at 23 °C (± 2 °C) and ≥ 25 % r.h.	10 ⁶ – 9 x 10 ⁷ Ohm	< 10 ⁶ Ohm	10 ⁶ – 9 x 10 ⁷ Ohm	< 10 ⁶ Ohm
		Measuring the installed floor at 23 °C (± 2 °C) and < 25 % r.h., installed on an appropriate subfloor build up	10 ⁶ – 10 ⁹ Ohm***	< 10 ⁶ Ohm	10 ⁶ – 10 ⁹ Ohm***	< 10 ⁶ Ohm
Operator system – Resistance to ground	ESD STM 97.1/ IEC 61340-4-5	For the system floor/conductive footwear (R < 5 x 10 ⁶ Ohm) measuring the installed floor at 23 °C (± 2 °C) and ≥ 25 % r.h.	≤ 3.5 x 10 ⁷ Ohm	≤ 3.5 x 10 ⁷ Ohm	≤ 3.5 x 10 ⁷ Ohm	≤ 3.5 x 10 ⁷ Ohm
Body voltage generation	ESD STM 97.2 IEC 61340-4-5	Tested with defined conductive footwear at 23 °C and 12 % r.h.	← < 10V →			
Resistance to earth	EN 1081		10 ⁶ – 9 x 10 ⁷ Ohm	< 10 ⁶ Ohm	10 ⁶ – 9 x 10 ⁷ Ohm	< 10 ⁶ Ohm
Insulation resistance	VDE 0100-600		≥ 1 x 10 ⁹ Ohm	-	≥ 5 x 10 ⁴ Ohm	≥ 1 x 10 ⁹ Ohm

* In case of increased impact of oils, greases, acids, alkalis and other aggressive chemicals please contact us.
 ** If installed electrically dissipative and conductive in conformity with our installation instruction and according to the recommendations of the adhesive manufacturer. The used adhesive has to have a permanent resistance of R < 3 x 10⁶ Ohm according to EN ISO 22637.
 *** If extremely low humidity values (< 25 % relative air humidity (= r.h.)) are expected for a longer period, please contact nora systems GmbH, Technical Service, for advice.

EN 1817: Specification for homogeneous and heterogeneous smooth elastomer floor coverings
 Colour variations due to different production batches as well as technical alterations to improve the product have to be accepted.

noracare®

Designs: seneo, uneo

	Test method	Requirements	Average test results from running production
CE conformity	EN 14041		Manufacturer: nora systems GmbH, D-69469 Weinheim
DoP-No.	EN 14041		0035
Thermal conductivity	EN 10456	$\lambda = 0.25 \text{ W/(m·K)}$	Fulfilled
Dynamic coefficient of friction	EN 13893	DS	Fulfilled
Reaction to fire	EN 13501-1	Not bonded	C _f -s1
Reaction to fire	EN 13501-1	Bonded on mineral subfloor	B _f -s1

Properties acc. to EN 1817

Thickness	EN ISO 24346	Mean value $\pm 0.15 \text{ mm}$ acc. to EN 1817	2.0 mm
Dimensional stability	EN ISO 23999	$\pm 0.4 \%$	$\pm 0.3 \%$ *
Flexibility	EN ISO 24344, procedure A	Mandrel diameter 20 mm, no fissuring	Fulfilled
Hardness	ISO 48-4	$\geq 75 \text{ Shore A}$ acc. to EN 1817	96 Shore A
Residual indentation	EN ISO 24343	Mean value $\leq 0.15 \text{ mm}$ at thickness $< 2.5 \text{ mm}$	0.05 mm
Abrasion resistance at 5 N load	ISO 4649, procedure A	$\leq 250 \text{ mm}^3$	100 mm ³
Colour fastness to artificial light	ISO 105-B02, procedure 3	At least level 6 on the blue scale; \geq level 3 on the grey scale	Fulfilled
Classification	EN ISO 10874	Commercial/Industrial	34/42

Additional technical properties

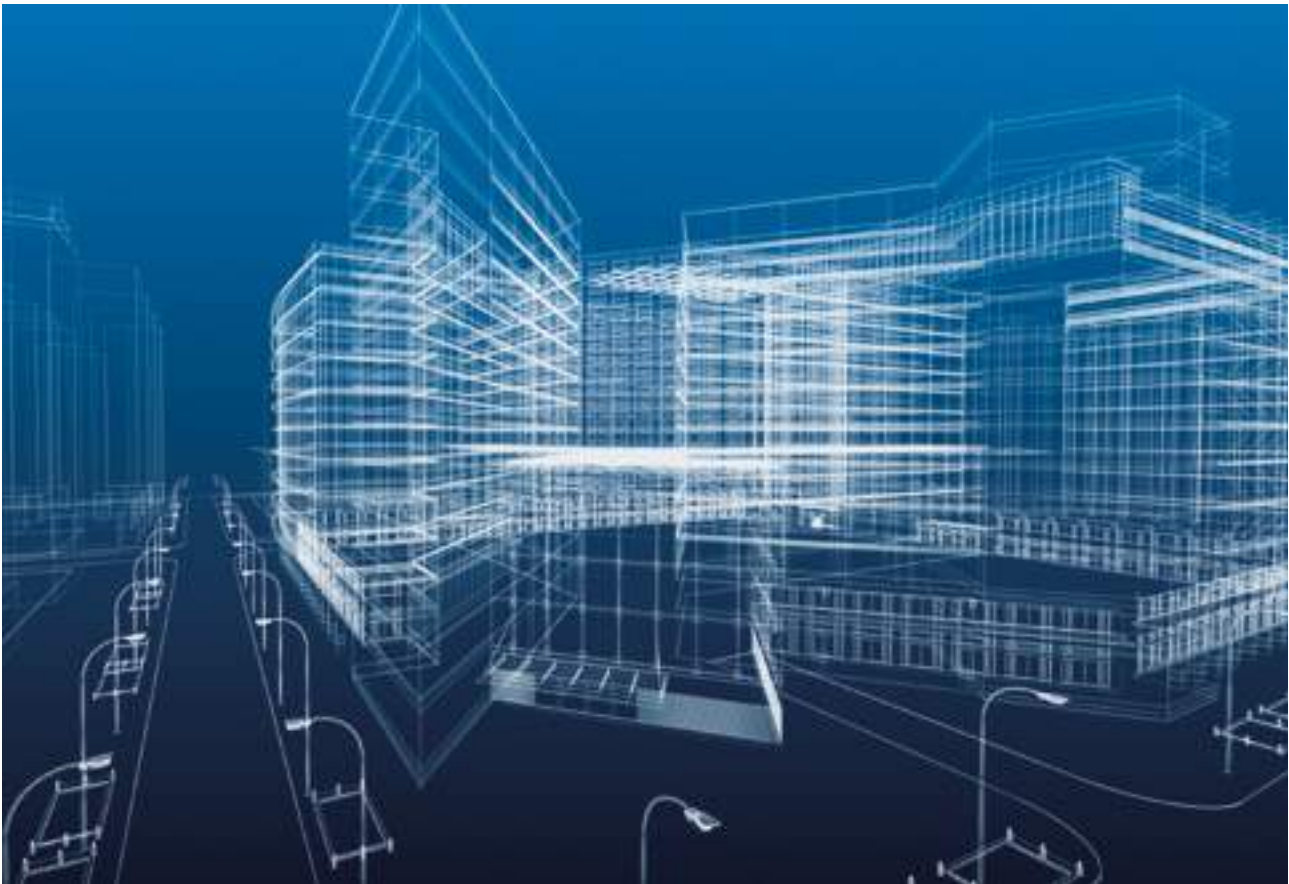
Toxicity of fire gases	DIN 53436		Carbonisation gases are non-toxic
Anti-slip properties	DIN 51130	According to DGUV 108-003	R 10
	DIN 51097		A
Improvement in footfall sound absorption	ISO 10140-3		5 dB
Effect of chemicals	EN ISO 26987		Resistant depending on concentration and time of exposure**
Electrical insulation properties	EN 1081 R1		$> 10^{10} \text{ Ohm}$
Electrical propensity when walked upon	EN 1815		Antistatic, charging in case of rubber soles $< 2 \text{ kV}$
Effect of a castor chair	EN ISO 4918		Suitable if castor wheels, type W, according to EN 12529 are used
Underfloor heating	EN 1264-2		Suitable, max. 35° C

* 6 h at 50° C

** In case of increased impact of oils, greases, acids, alkalis and other aggressive chemicals please contact us.

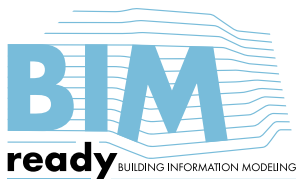
EN 1817: Specification for homogeneous and heterogeneous smooth elastomer floor coverings.

Colour variations due to different production batches as well as technical alterations to improve the product have to be accepted.

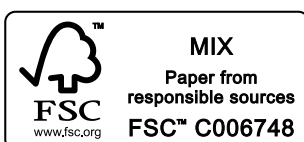


Building Information Modeling (BIM)

Building Information Modeling (BIM) is a software-supported method used to optimise the planning, construction and management of buildings. All relevant material and building data is digitally captured, managed, combined and cross-linked. This information can be used throughout the entire life cycle of a building, starting with the documentation of planning, through cost and project management to building operation.



We offer BIM files of the floor covering and stairtread standard portfolio for download on our website. Further information can be found at bim.nora.com.



Please note

norament[®], noraplan[®] and noracare[®] have been developed for indoor installation. nora[®] floor coverings are not suitable for installation in outdoor applications or in areas with constant and direct wet loads.

The particulars given in this brochure are for informational purposes only concerning the products presented. They represent descriptions or designations, but not any warranted qualities. This information cannot cover all possible service conditions which our floor coverings may encounter.

If the floor covering is going to be exposed to out-of-the-ordinary service conditions and stresses (e.g. extreme UV radiation, chemical substances or other aggressive media), please contact us for advice.

We will be pleased to supply you on request with flooring samples to enable you to carry out in-house tests. We reserve the right to alter technical values as part of an ongoing product improvement process.

This brochure as well as the pictures and illustrations it contains are subject to a copyright owned by or licensed for nora systems GmbH, Weinheim, and may be used with its previous written approval only.

